



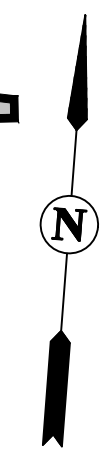


VICINITY MAP  
NOT TO SCALE

**LEGEND**

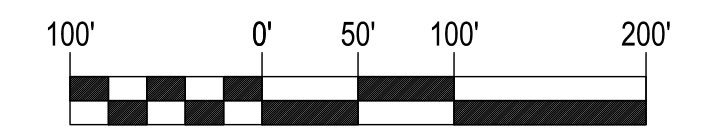
-  PROPERTY BOUNDARIES
-  PROJECT AREA LIMITS
-  PROJECT AREA NUMBER
-  DISTRICT LIMITS



BOUNDARY MAP OF  
**SAN FRANCISCO  
ENHANCED INFRASTRUCTURE  
FINANCING DISTRICT NO. 1  
(POWER STATION)**  
CITY AND COUNTY OF SAN FRANCISCO,  
STATE OF CALIFORNIA

**cbg** SAN RAMON (925) 866-0322  
ROSEVILLE (916) 788-4456  
WWW.CBANDG.COM

CIVIL ENGINEERS SURVEYORS PLANNERS  
SCALE: 1" = 100' FEBRUARY 2023



GRAPHIC SCALE

**PROJECT AREA SUMMARY**

PROJECT AREA	MAP REFERENCE	FINAL MAP	APN
1	BLOCK 15	10714	4175-026
2	BLOCK 7A	10714	4232-019
	BLOCK 7B	10714	4232-020
3	BLOCK 11	10714	4232-021
4	BLOCK 8	10714	4232-022
5	BLOCK 12	10714	4232-023
6	BLOCK 2	10714	4175-027
	CRAIG LANE	10714	4175-023
7	BLOCK 5	N/A	4175-019
	HUMBOLDT STREET	N/A & 10714	4175-019 & 4175-025
	GEORGIA LANE	10714	4175-020
8	BLOCK 14	N/A	4175-018 (P)
	GEORGIA STREET	N/A	4175-018 (P) & 4175-019
9	BLOCK 1	N/A	4175-018 (P) & 4175-019
	LOUISIANA STREET	10714	4175-021
10	CRAIG LANE	N/A	4175-019
	BLOCK 3	N/A	4175-028
	CRAIG LANE	N/A	4175-028
	MARYLAND STREET (NORTH)	10714	4175-022
11	BLOCK 4	N/A	4175-028
	DELAWARE STREET (NORTH)	N/A	4175-028
12	BLOCK 9	N/A	4175-028
	DELAWARE STREET (SOUTH)	10714	4232-017
	MARYLAND STREET (SOUTH)	10714	4232-018
	23RD STREET	10714	4232-014
	HUMBOLDT STREET PLAZA	N/A	4175-028
	WATERFRONT PARK	N/A	4175-028
	STACK PLAZA	N/A	4175-028
	LOT N	10714	4232-016
13	LOT O	10714	4232-015
	PG&E PROPERTY	N/A	4175-018 (P) & 4175-019
14	HUMBOLDT STREET	N/A	4175-019
	MULLER PROPERTY	N/A	4232-010 (P)

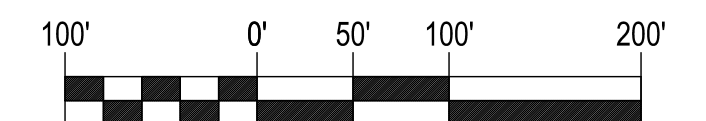
BOUNDARY MAP OF  
**SAN FRANCISCO**  
**ENHANCED INFRASTRUCTURE**  
**FINANCING DISTRICT NO. 1**  
**(POWER STATION)**

CITY AND COUNTY OF SAN FRANCISCO,  
 STATE OF CALIFORNIA

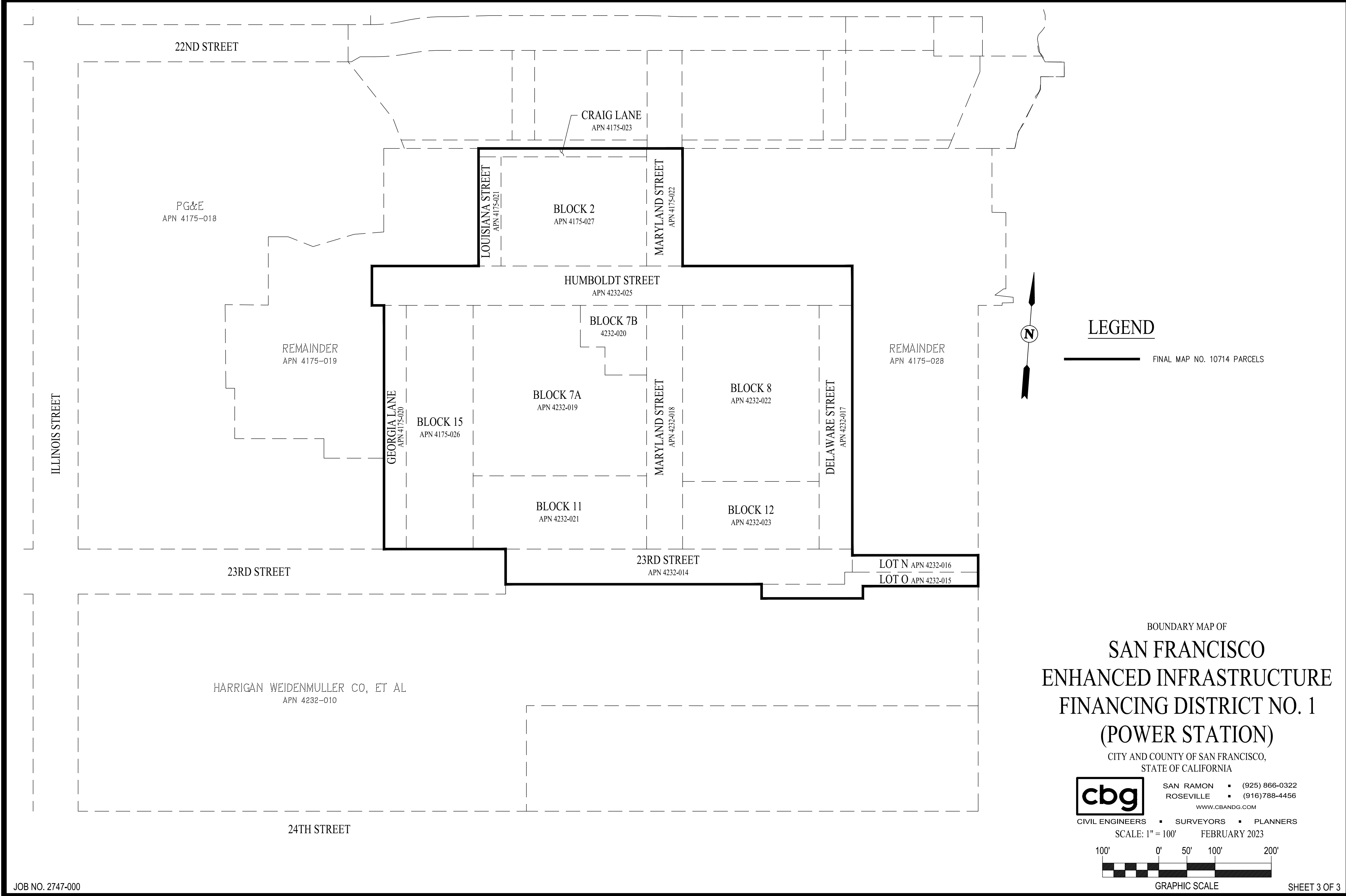


SAN RAMON    (925) 866-0322  
 ROSEVILLE    (916) 788-4456  
 WWW.CBANDG.COM

CIVIL ENGINEERS    SURVEYORS    PLANNERS  
 SCALE: 1" = 100'    FEBRUARY 2023



GRAPHIC SCALE



**LEGEND**

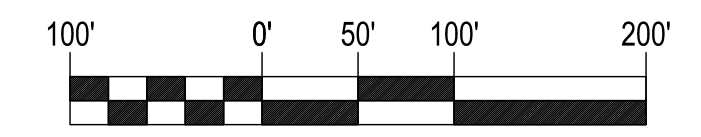
— FINAL MAP NO. 10714 PARCELS



BOUNDARY MAP OF  
**SAN FRANCISCO**  
**ENHANCED INFRASTRUCTURE**  
**FINANCING DISTRICT NO. 1**  
**(POWER STATION)**  
 CITY AND COUNTY OF SAN FRANCISCO,  
 STATE OF CALIFORNIA

**cbg** SAN RAMON (925) 866-0322  
 ROSEVILLE (916) 788-4456  
 WWW.CBANDG.COM

CIVIL ENGINEERS SURVEYORS PLANNERS  
 SCALE: 1" = 100' FEBRUARY 2023



GRAPHIC SCALE