

Sustainability/Resilience

Brian Strong, Office of the City Administrator, Resilience and Capital Planning
Cyndy Comerford, San Francisco Environment

Citywide Multi-Hazard Effort



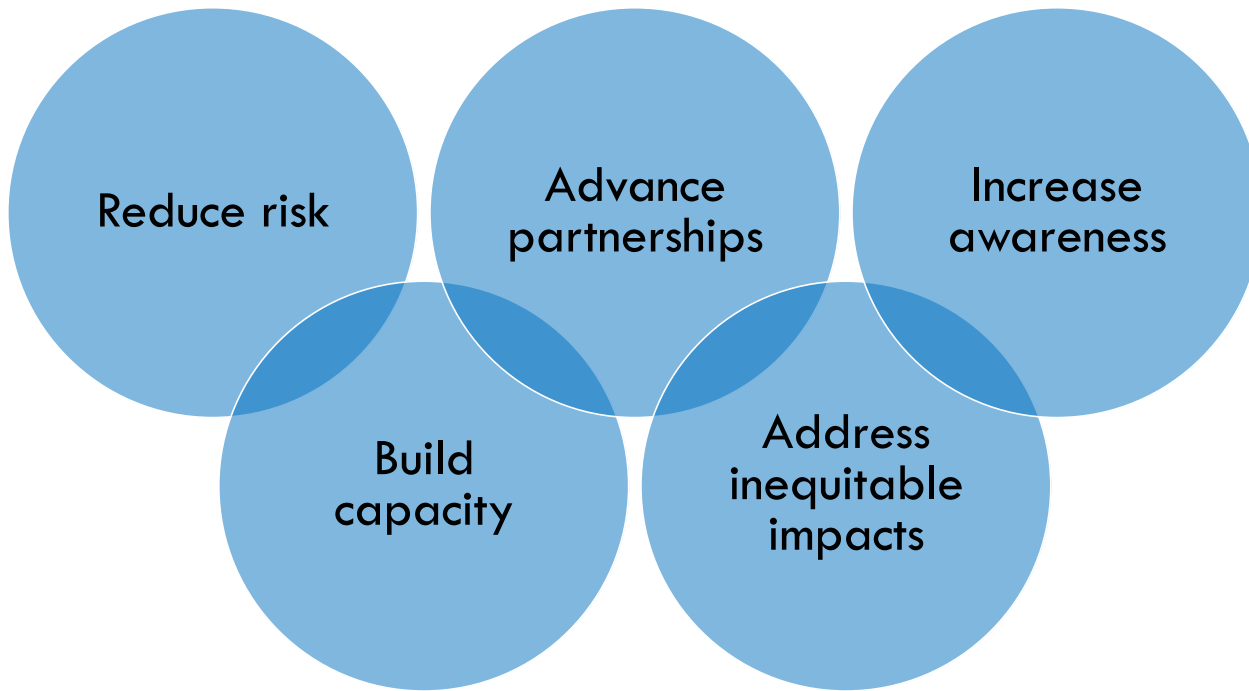


HAZARDS AND CLIMATE RESILIENCE PLAN

Why The HCR Plan Matters

- Makes hazard information more accessible
- Data/Science driven approach with extensive department and stakeholder engagement
- All hazard mitigation and climate adaptation strategies in one place
- Provides a roadmap to improve resilience that captures previous and ongoing mitigation and adaptation efforts
- Focus on vulnerable communities, health, and equity
- Living document requiring annual progress updates

Goals & Contents



Chapters

1. Introduction
2. Planning Process
3. Risk Landscape
4. Hazard Analysis
5. Vulnerability & Consequences
6. Capabilities
7. Strategy
8. Plan Maintenance

Hazards Analysis



Vulnerable Populations
 Extreme Heat Health Vulnerability
 Some Health Impacts
 Most Health Impacts

Sample map

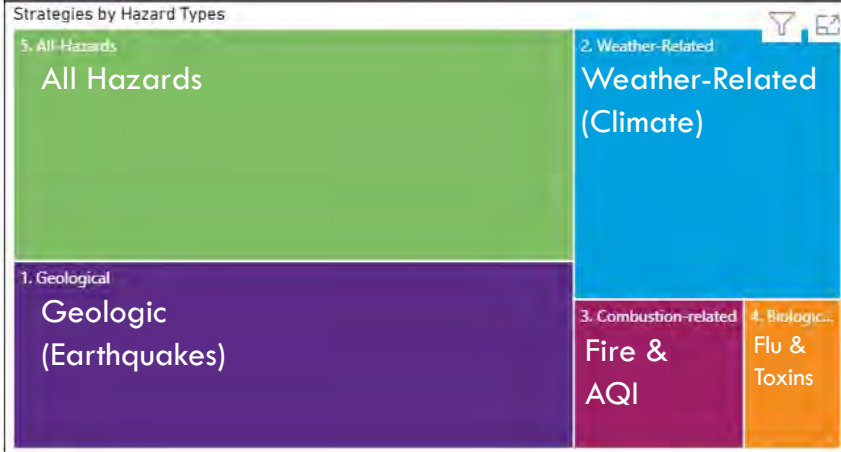
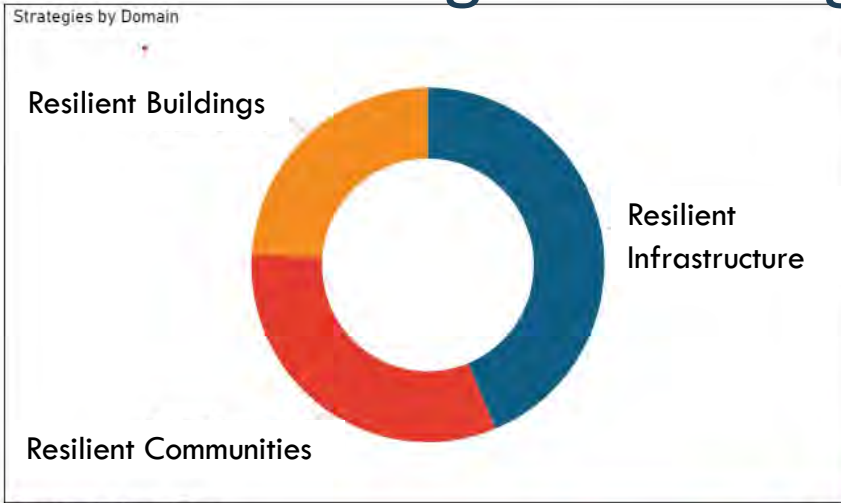
The purpose of this Index is to predict the distribution of health impacts in San Francisco. While this Index predicts certain neighborhoods to have a greater concentration of extreme heat health impacts, we anticipate health impacts in every neighborhood and all neighborhoods must prepare their vulnerable residents for these health impacts.

Climate change analysis incorporated into relevant hazards

Earthquake	Tsunami	Landslide	Dam or Reservoir Failure	Flooding	High Wind	Extreme Heat	Drought	Large Urban Fire	Wildfire	Poor Air Quality	Pandemic	Hazardous Materials
Geological				Weather-Related				Combustion-Related			Biological & Toxic	

Over 95 Strategies To Mitigate Risks

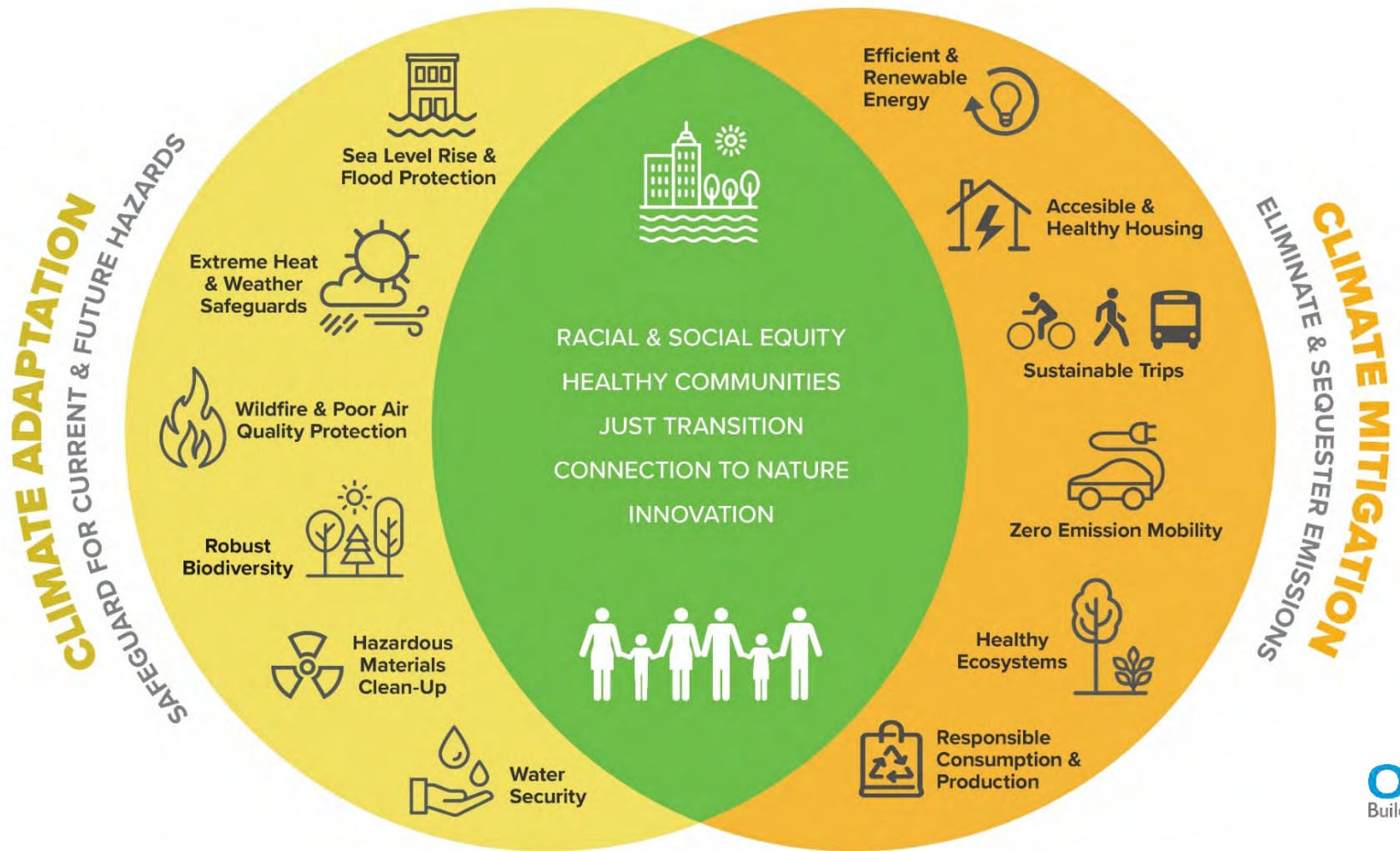
Searchable dashboard at onesanfrancisco.org



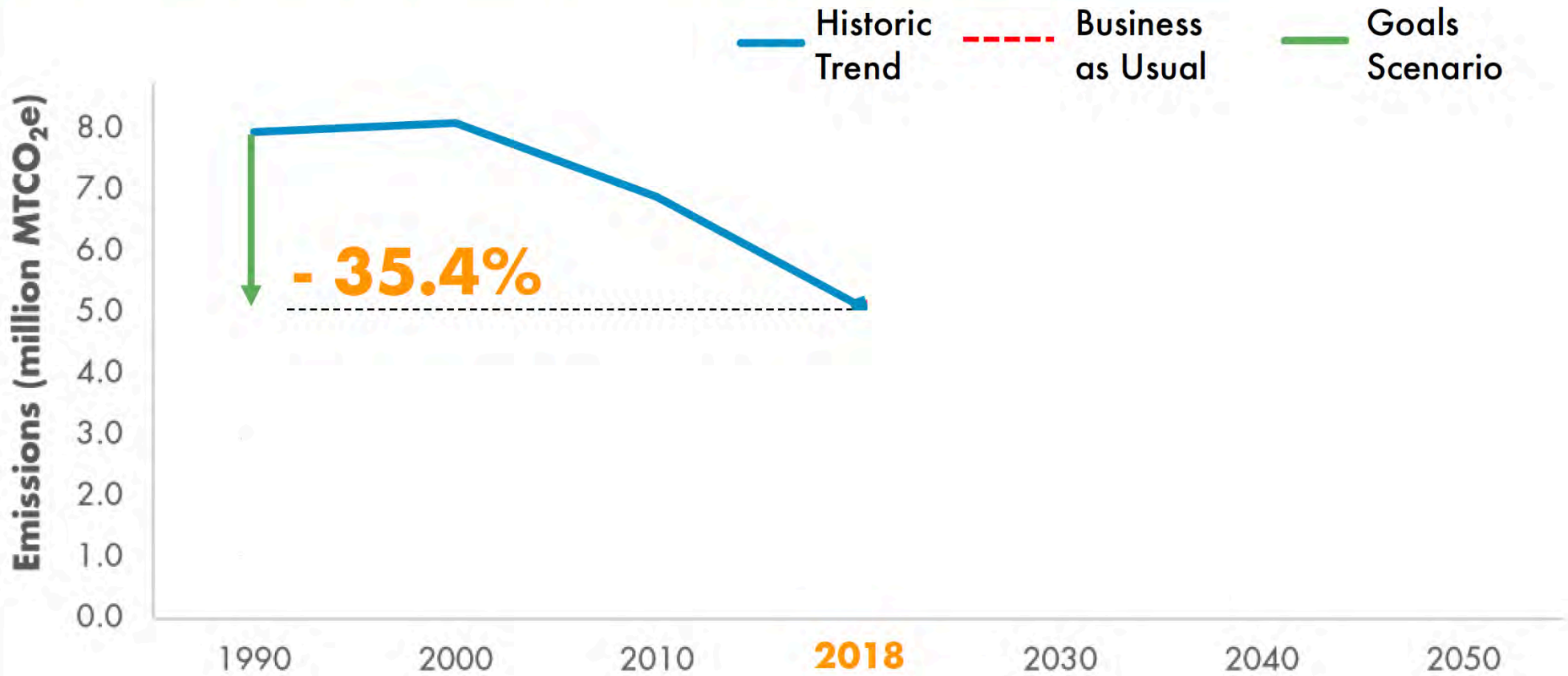
Strategy Name	Responsible Agency
Support volunteer emergency preparedness, response, and recovery programs including the Neighborhood Emergency Response Team (NERT) and Auxiliary Law Enforcement Response Team (ALERT).	SFFD,SFPD
Support the Small Business Development Center	DEWD
Support increased building electrification (fuel switching) and mechanical upgrades	SFE
Study the overlap between vulnerable populations and vulnerable buildings	Planning,DPH,ORCP
Study emergency clean air and cooling capacity at key community facilities	DPH
Strengthen citywide efforts to conserve, restore, and steward biodiversity	SFE
Seismically improve the Port's Department Operations Control Center, Headquarters, and Joint Operations Control facilities	Port,SFPD,SFFD,CPC
Secure a resilient public safety training facility for SFFD	SFFD
Review the Guidance for incorporating sea level rise into capital planning	ORCP
Replace mercury-containing lighting in preschools and daycare centers	SFE
Reduce seismic and flood risk along three miles of the San Francisco Waterfront from Fisherman's Wharf to Mission Creek	Port
Perform Gap analysis of vulnerable populations (ie. Access and Functional Needs) and available city services	MOD
Participate in US Army Corps of Engineers (USACE)/Port Flood Study	Port
Install solar + storage systems at critical facilities	DPW,Varies
Improve Resilience and Sustainability for regional dams and ancillary facilities from probably maximum flood (PMF) and maximum credit earthquake (MCE) events	SFPUC,DSOD
Increase the Resilience of the Municipal Fiber Optic Network	SFDT
Increase the Resilience of the 911 Radio System	SFDT
Increase resilience and operation efficiency of maintenance yards	DPW
Increase privately-owned building weatherization rates	SFE
Improve the capacity of the Portable Water Supply System to fight fires following earthquakes and other large urban fires	SFFD
Improve San Francisco's Implementation of the State's Safety Assessment Program	ORCP,DBI

CLIMATE RESILIENT SAN FRANCISCO

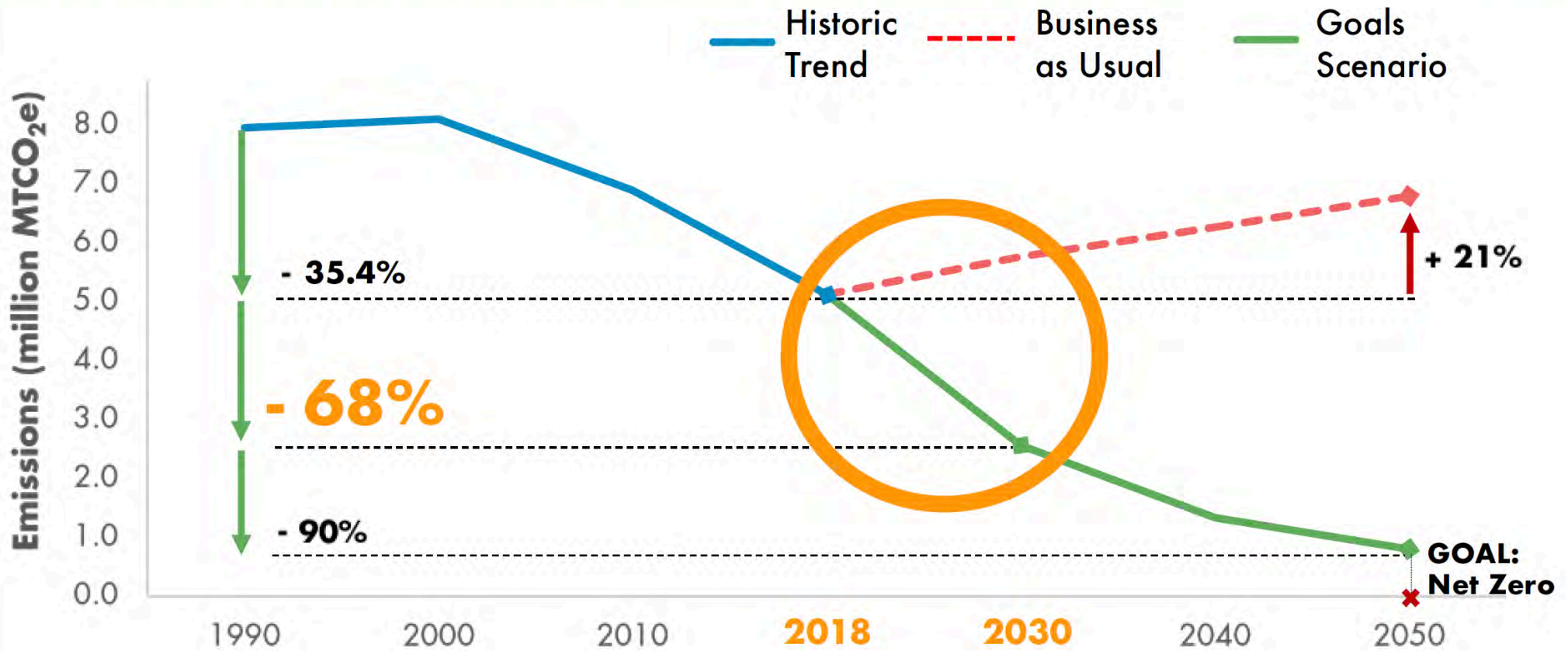
People - Buildings - Infrastructure




Climate Action: Our Progress to Date



Towards a Net Zero and Resilient Future



Vision for the Climate Action Plan



San Francisco's post-pandemic climate action plan needs to be one that's about

- creating good jobs**
- meaningful work**
- economic recovery**
- resistant to crisis-level shocks**
- resilient, healthy, and equitable**

Our response to this health crisis will shape the climate crisis for decades to come.

Critical Issues Connected to Our Environment



Homelessness



Housing Affordability



Pandemics



Economic Recovery

SAN FRANCISCO CLIMATE ACTION

0 80 100



Our Framing



➤ The CAP's Vision has 4 lenses



Sample CAP Strategies that Address Critical Issues



End homelessness with zero emission buildings



Reduce air pollution with electric vehicles and bikes



Help people make responsible choices in food, clothes, and everyday goods



Create markets and jobs to repair and repurpose materials

San Francisco's 10-Year Capital Plan

1. Constrained 10-year plan of finance
 - Updated every odd year, it coordinates and prioritize infrastructure investments
 - Overseen by Capital Planning Committee (chaired by City Administrator with Executive and Legislative branch representation)
 - Current plan proposes to spend \$39B
2. Policies/Requirements
 - Pay-As-You-Go program
 - Debt (G.O. and Revenue bonds)
 - Infrastructure Financing Districts
 - Sea Level Rise Guidance
 - LEED Gold
3. Accomplishments
 - \$4.5B in GO bonds since 2008
 - AAA Ratings



Q&A with the Co-Chairs

Thank you!

Email us at *RecoverySF@sfgov.org*

<https://www.onesanfrancisco.org/covid-19-recovery>

Next ERTF Meeting: October 8, 2020 from 2-3:30pm