

SAN FRANCISCO SEA LEVEL RISE ACTION PLAN

**Capital Planning Commission
March 14th, 2016**



MAYOR EDWIN M. LEE

SLR COORDINATING COMMITTEE

Co-Chair: Fuad Sweiss, San Francisco Public Works Department

Co-Chair: Gil Kelley, San Francisco Planning Department

City Administrator's Office
San Francisco International Airport
San Francisco Public Utilities Commission
San Francisco Municipal Transportation Agency
Office of Economic and Workforce Development
Port of San Francisco
Office of Community Investment and Infrastructure
Department of Building Inspection
Capital Planning

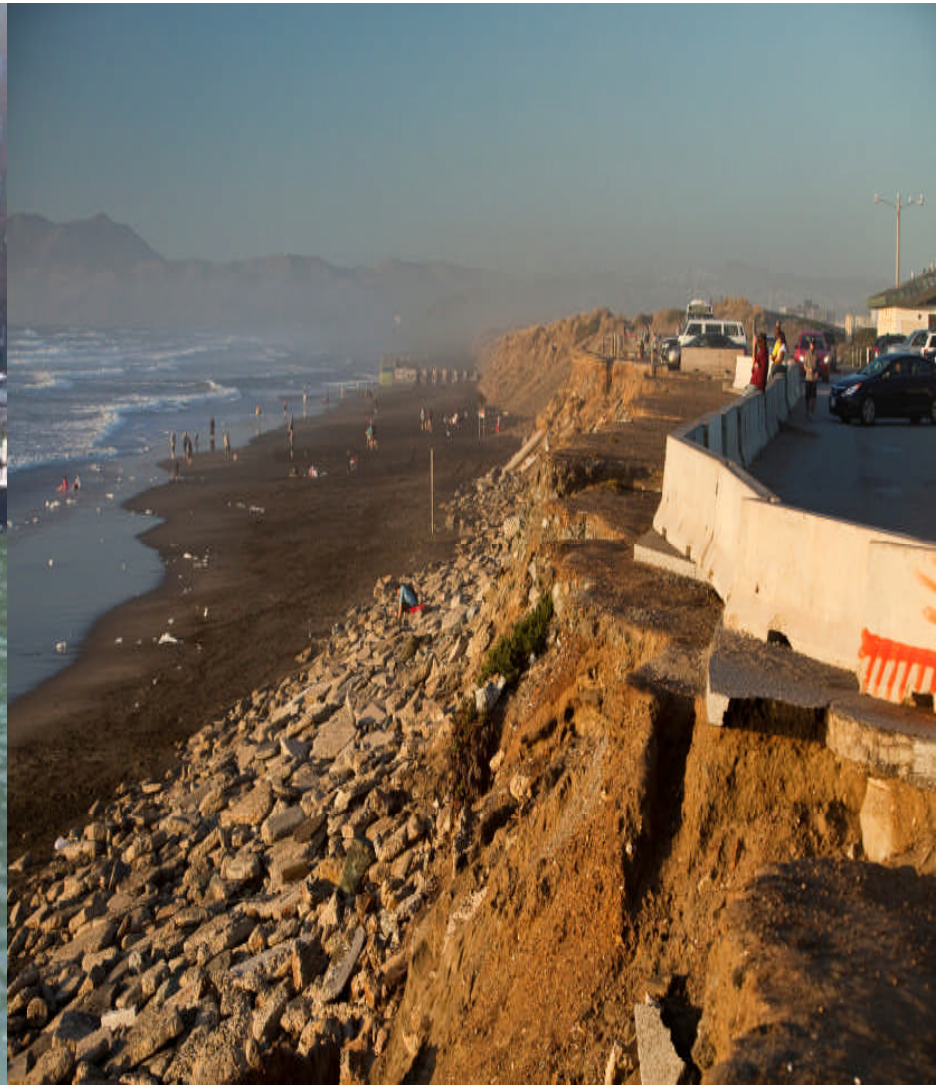
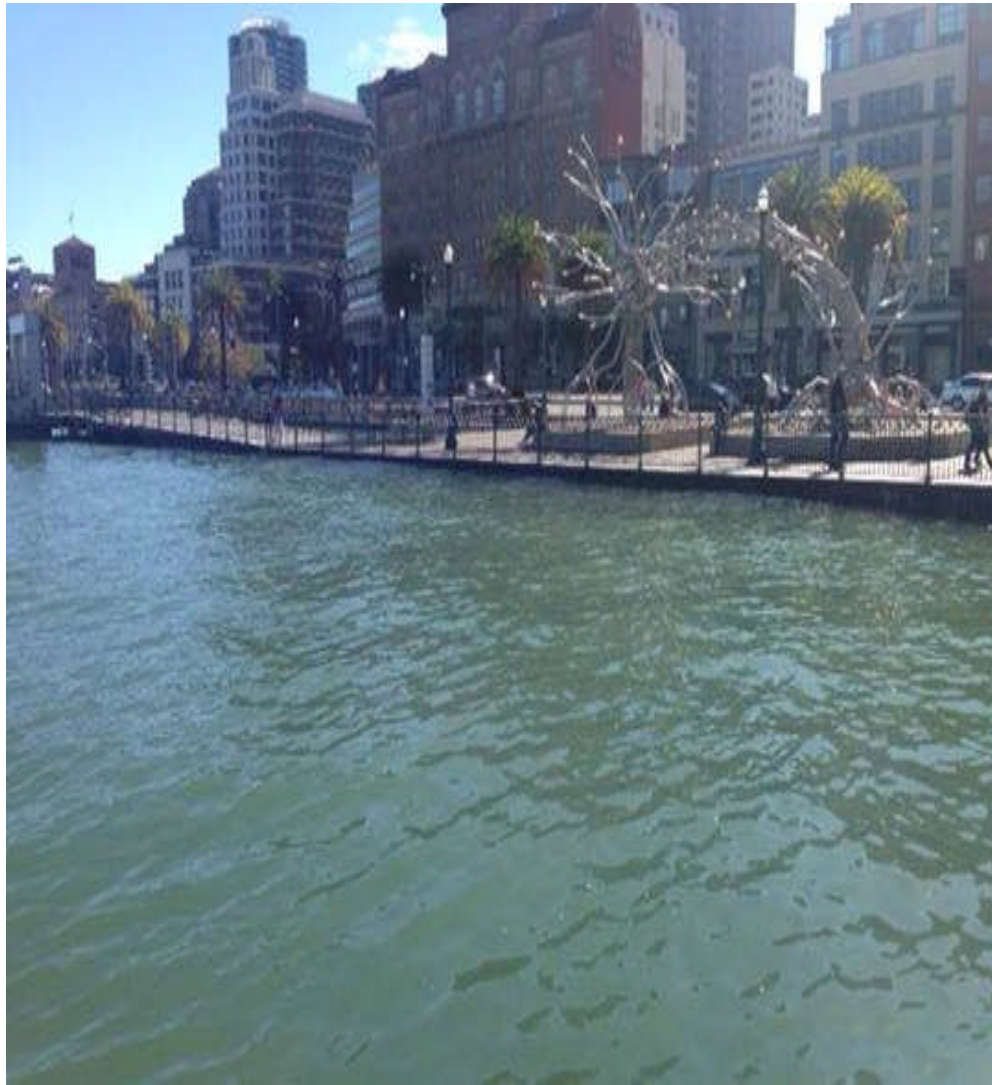
SAN FRANCISCO SLR PROJECTIONS

Year	Most Likely Projection (CEQA/Project Approvals*)	Upper Range (Long-range Planning*)
2030	6 in	12 in
2050	11 in	24 in
2100	36 in	66 in

Reference: Sea level rise for the Coasts of California, Oregon, and Washington: Past, Present, and Future (NRC 2012)

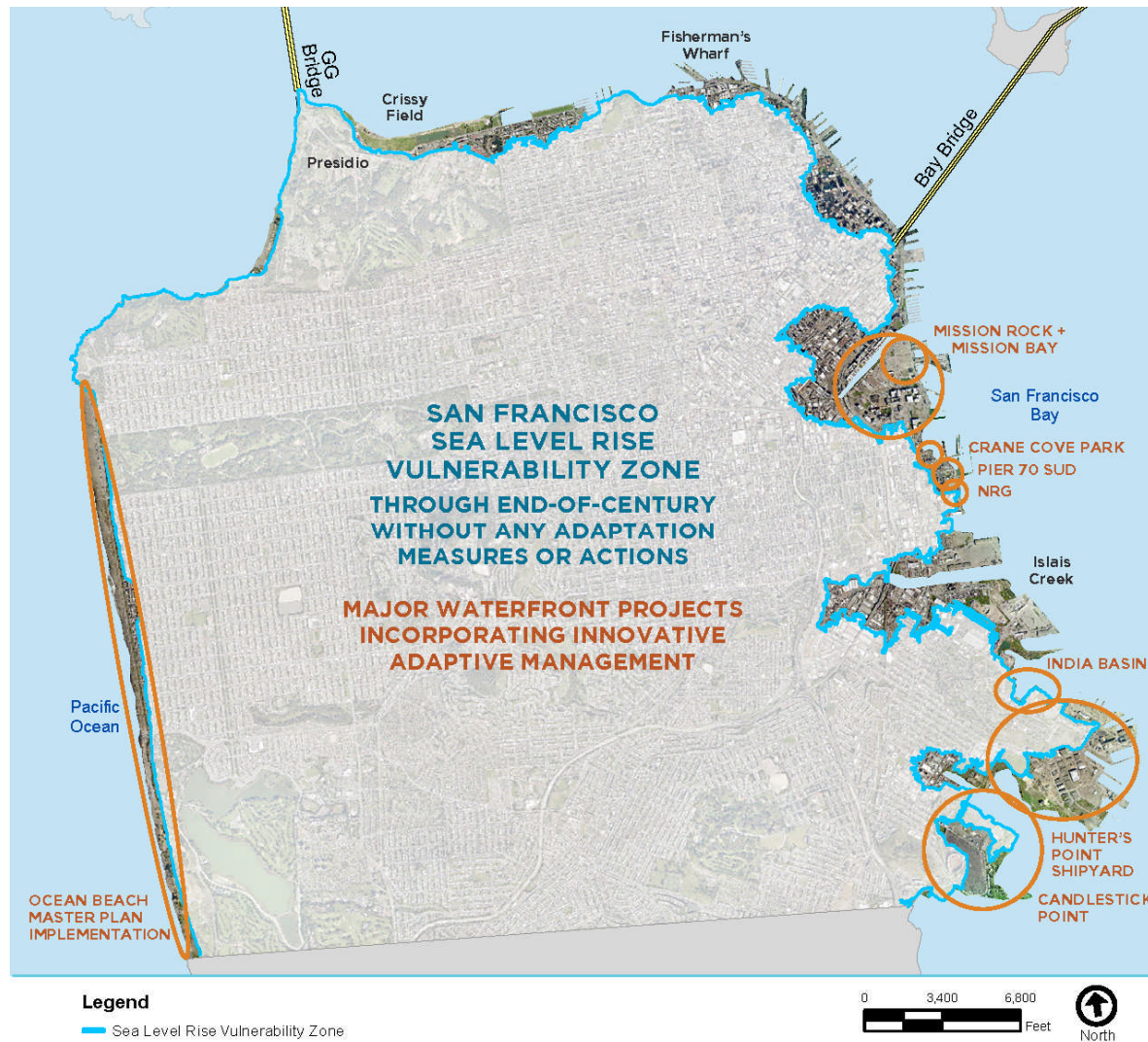
**Note: the City uses the National Research Council's (NRC) most likely SLR projection of 36" for ongoing planning and development purposes related to environmental review and project approvals. This Action Plan considers adaptive strategies to address the NRC's upper end estimate of 66" of SLR by 2100 in the event that future GHG emissions and land ice melting accelerates beyond current predictions.*

***With Storm Surge + King Tides: add ~ 40" (108" in 2100)**



SLR Vulnerability Zone

*(Note: blue line marks end
of century, upper range
projection with no action)*



COST OF INACTION

	Private Property	Public Property	Total Exposure
66" (Year 2100)	\$19 Billion	\$35 Billion	\$54 Billion
108" (Year 2100 w/storm surge)	\$38 Billion	\$37 Billion	\$75 Billion

(Note: numbers reflect end of century, upper range projection with no action in today's dollars)

PAST AND ONGOING OUTREACH AND ENGAGEMENT EFFORTS

(Note: dotted line marks end of century, upper range projection with no action)



VULNERABILITY AND RISK ASSESSMENTS

COMPLETED

- ▣ Property/Assets
 - Port
 - SFO
 - SFPUC
- ▣ Vulnerable Communities

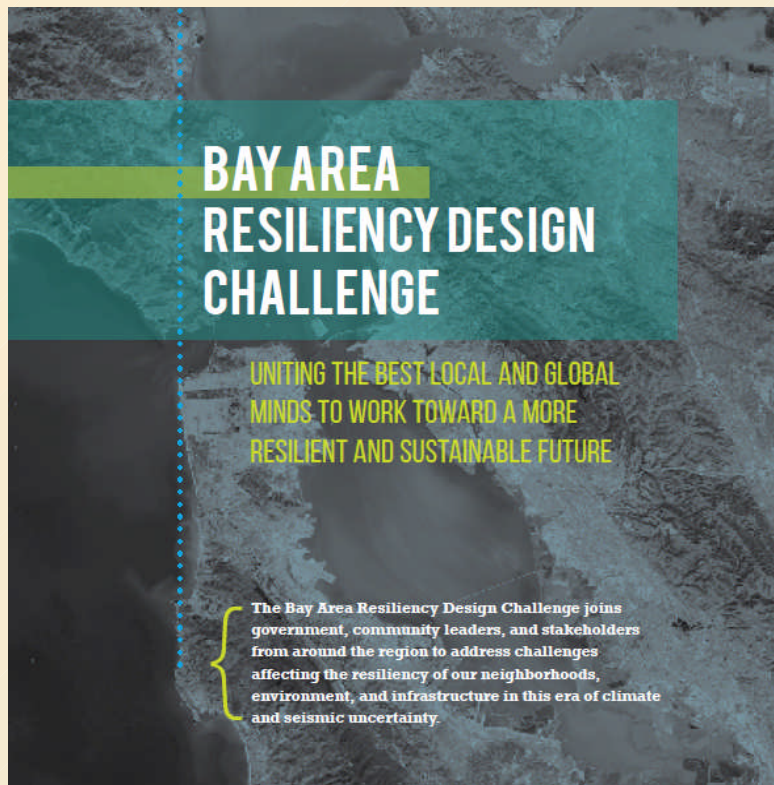
STILL NEEDED

- ▣ SFMTA Property/Assets
- ▣ Other Buildings and Properties
- ▣ Energy, Waste Systems
- ▣ Parks/Open Space
- ▣ Communications

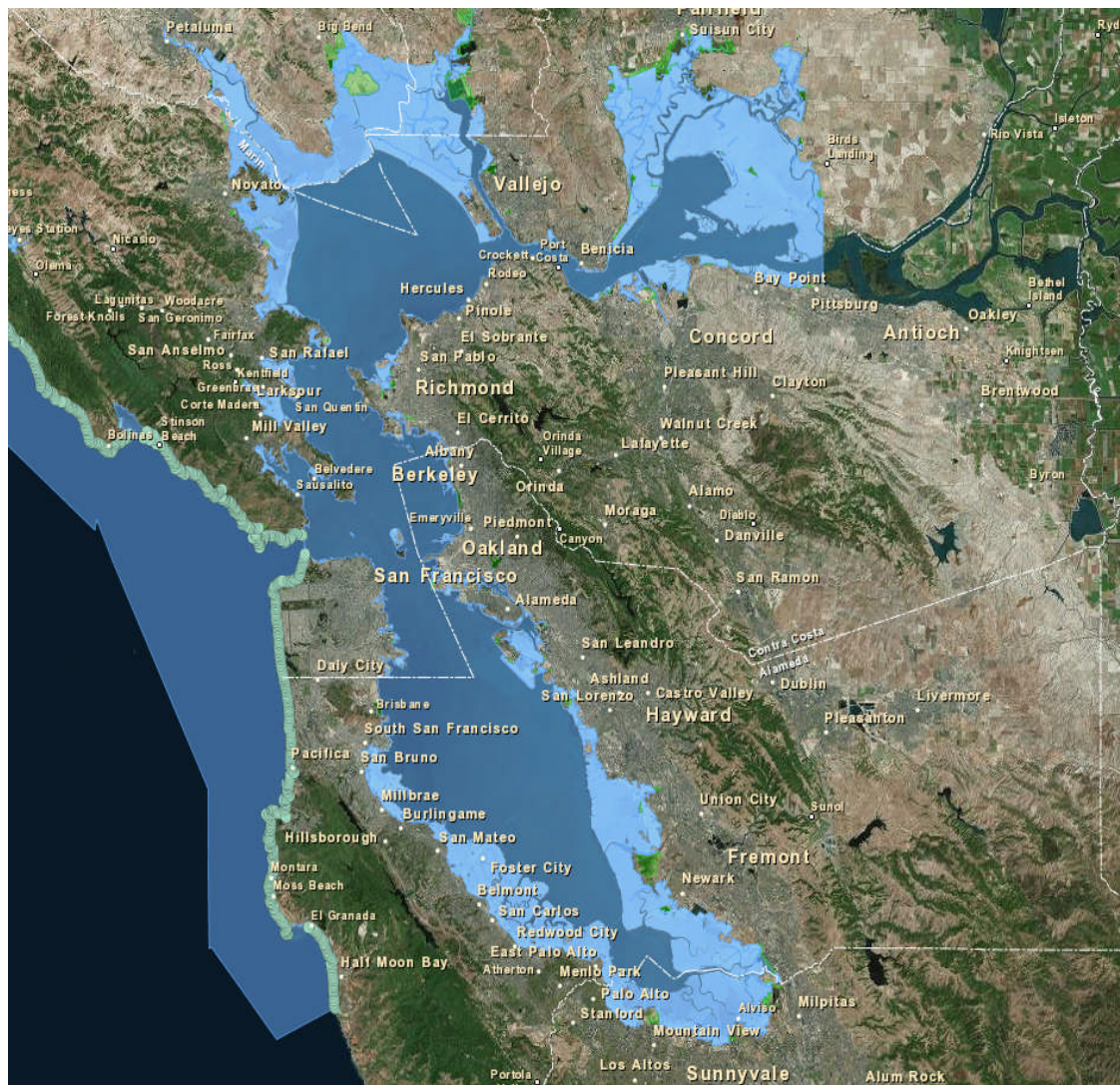
SEA LEVEL RISE PRIORITY ACTIONS [2016-2018]



RESILIENCE BY DESIGN CHALLENGE



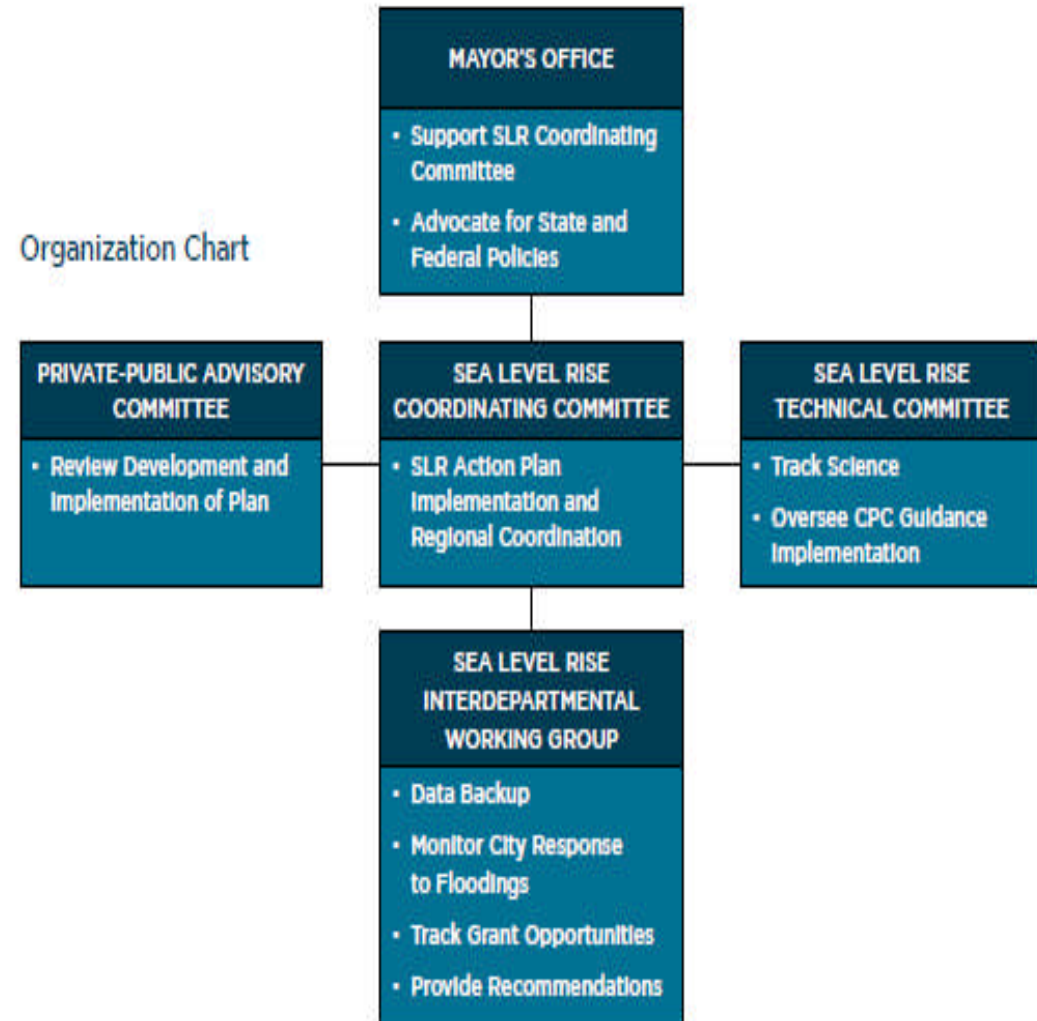
- Equitable
- Collaborative and Interdisciplinary
- Replicable and Implementable
- Innovative and Inspiring
- Community and Design-driven



LOCAL AND REGIONAL COOPERATION

ON-GOING COORDINATION

Organization Chart









THANK
YOU.

Diana Sokolove, Senior Planner
Citywide Planning
San Francisco Planning Department
PH: 415-575-9046
EM: diana.sokolove@sfgov.org

Photo by Michael Estigoy