

Exhibit A: Seawall Zone of Influence

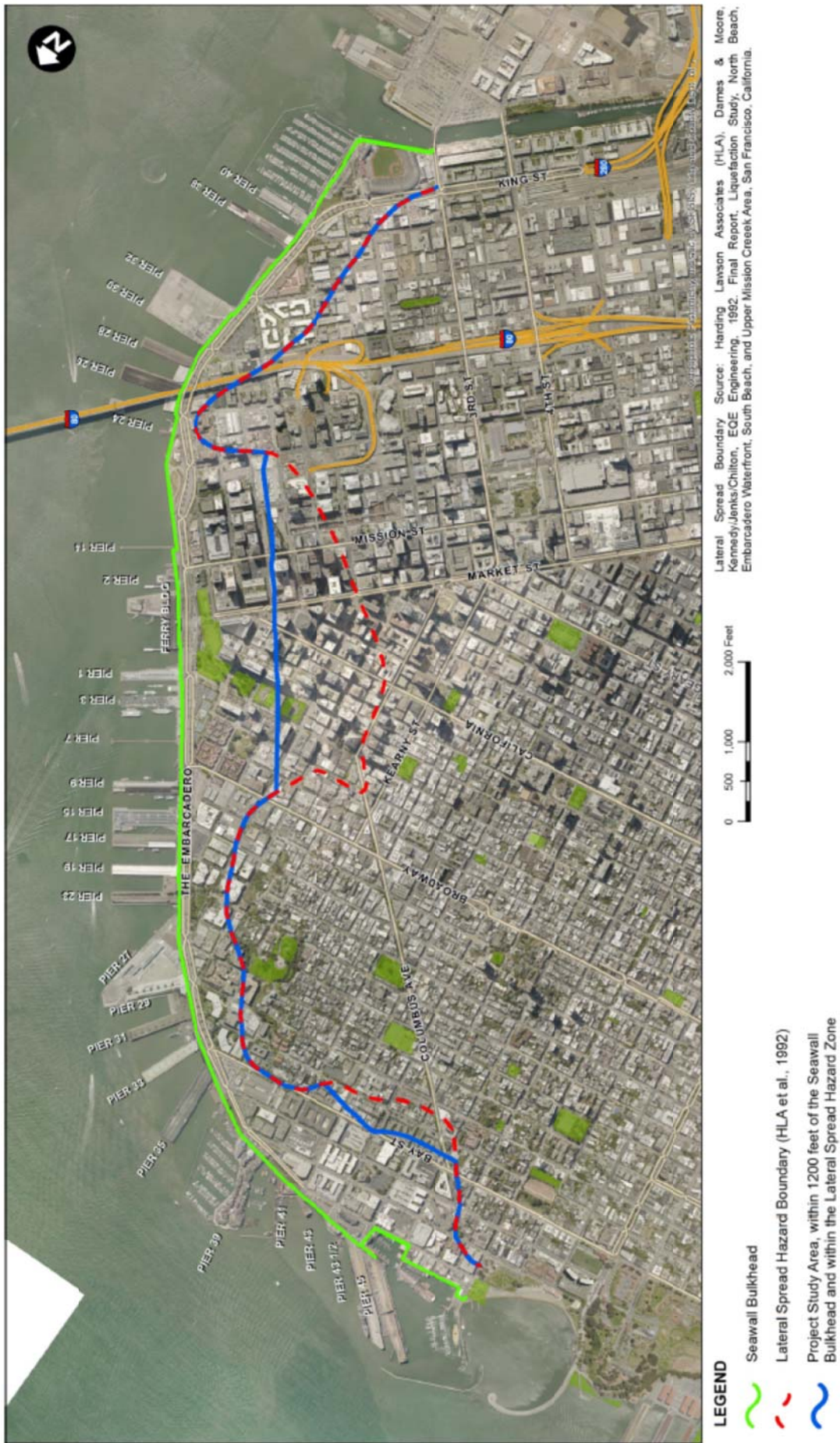
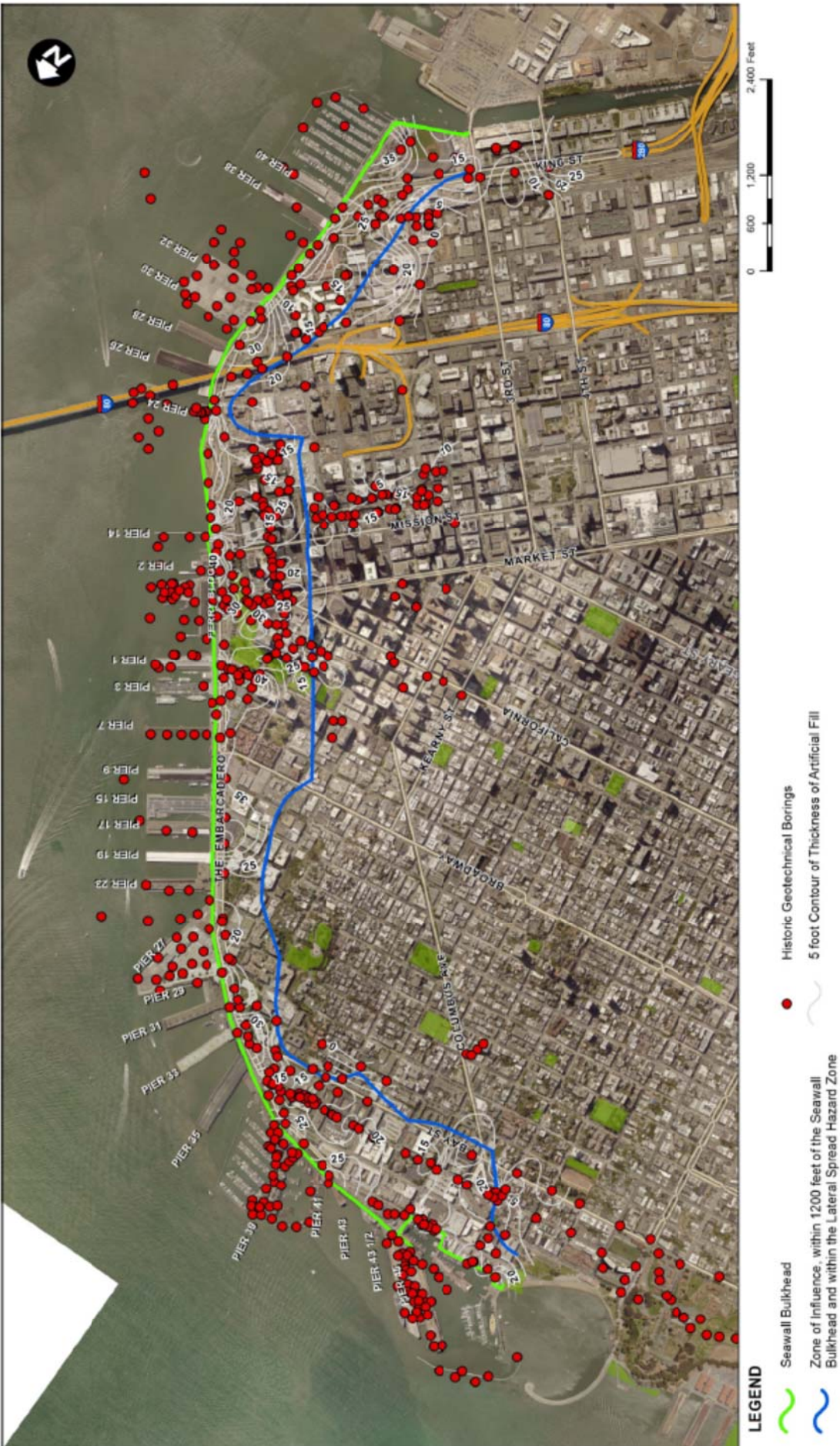


Exhibit B: Geotechnical Maps (1/3)
Thickness of Artificial Fill



This figure is an aerial map of San Francisco, California, overlaid with a red dot density heatmap and blue/green contour lines. The map shows the city grid, major streets (Market St, Broadway, Kearny St, Columbus Ave, Bay St, and the Embarcadero), and numerous piers along the waterfront. The red dots represent the density of a variable, with higher concentrations (indicated by darker red) clustered in the central and northern parts of the city, particularly around the Embarcadero and the area between Market St and Broadway. The blue and green contour lines represent the density of another variable, with values ranging from 0 to 100. The map also includes a north arrow in the top left corner.



Exhibit B: Geotechnical Maps (3/3)
Depth of Bedrock

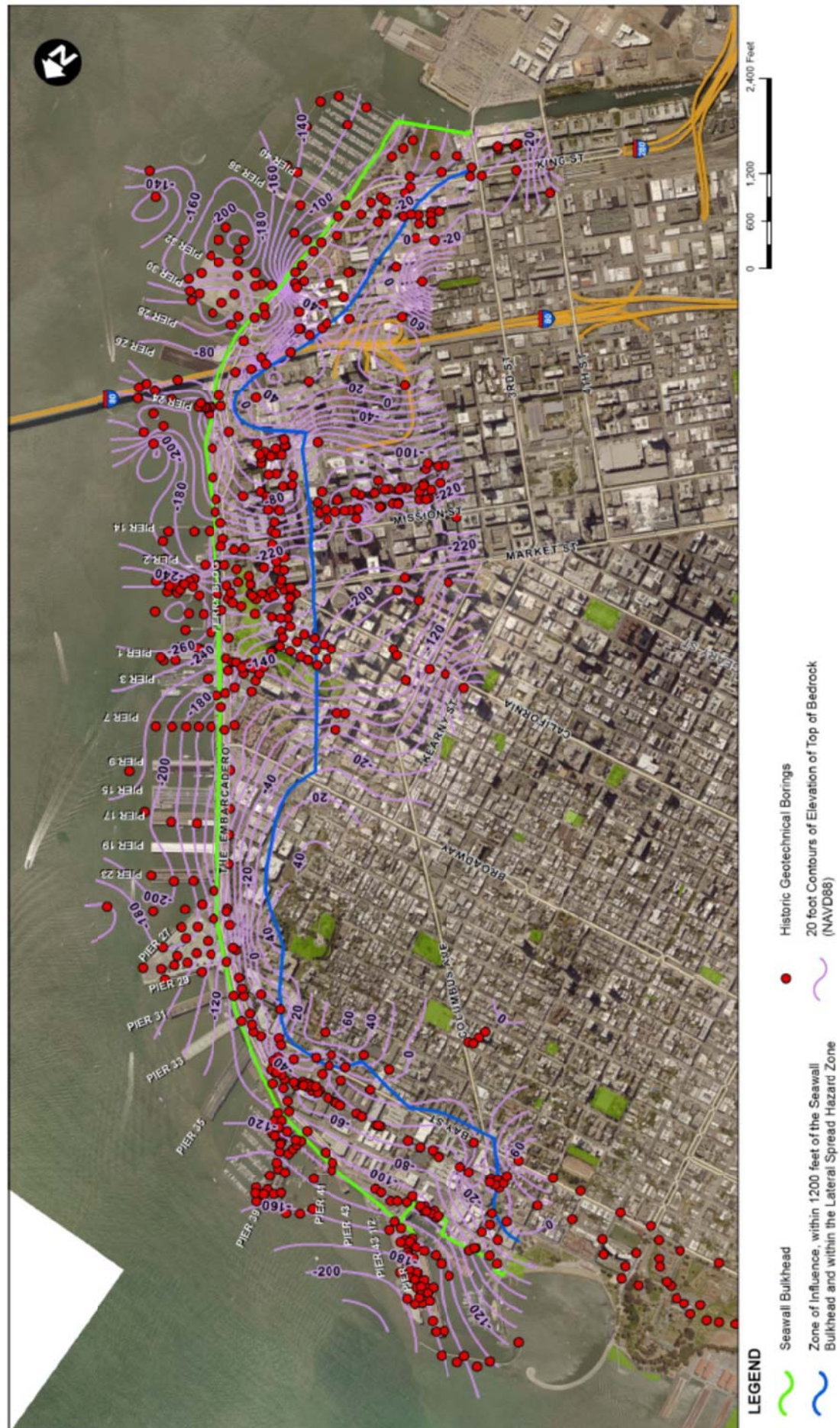


Exhibit C: Seawall Sections (1 of 8)
Historic Section B - Vicinity of Pier 43

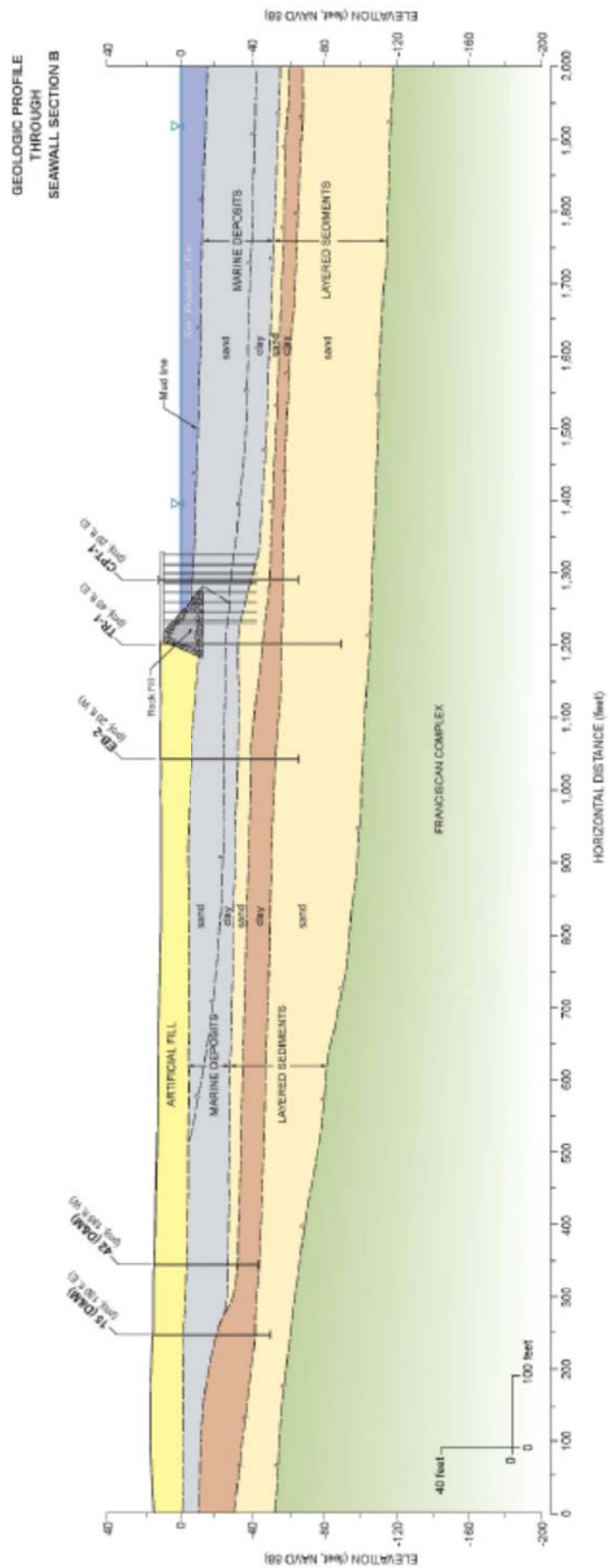


Exhibit C: Seawall Sections (2 of 8)
 Historic Section 1 - Vicinity of Pier 39

GEOLOGIC PROFILE
 THROUGH
 SEAWALL SECTION 1

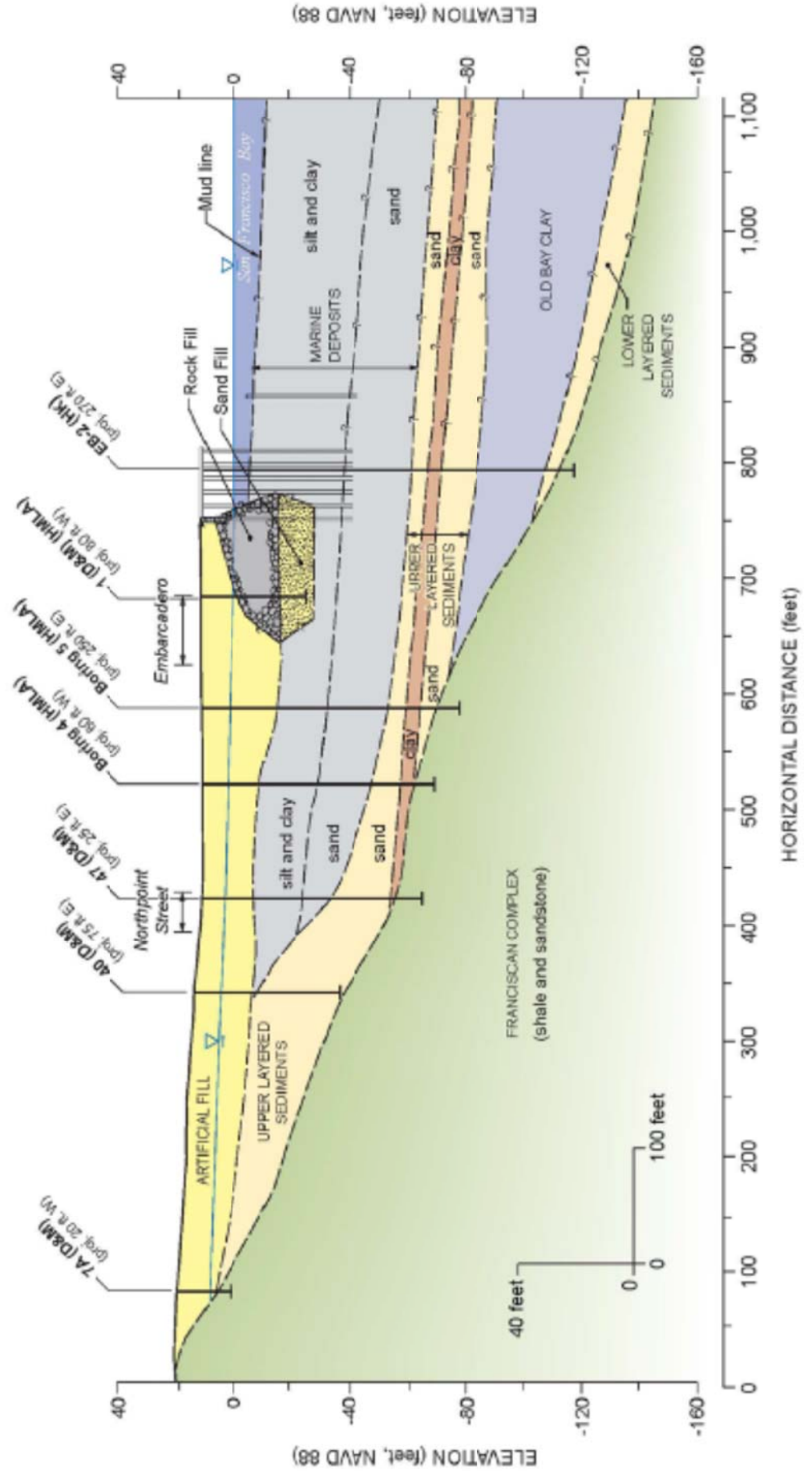


Exhibit C: Seawall Sections (3 of 8)
 Historic Section 3 - Vicinity of Pier 29

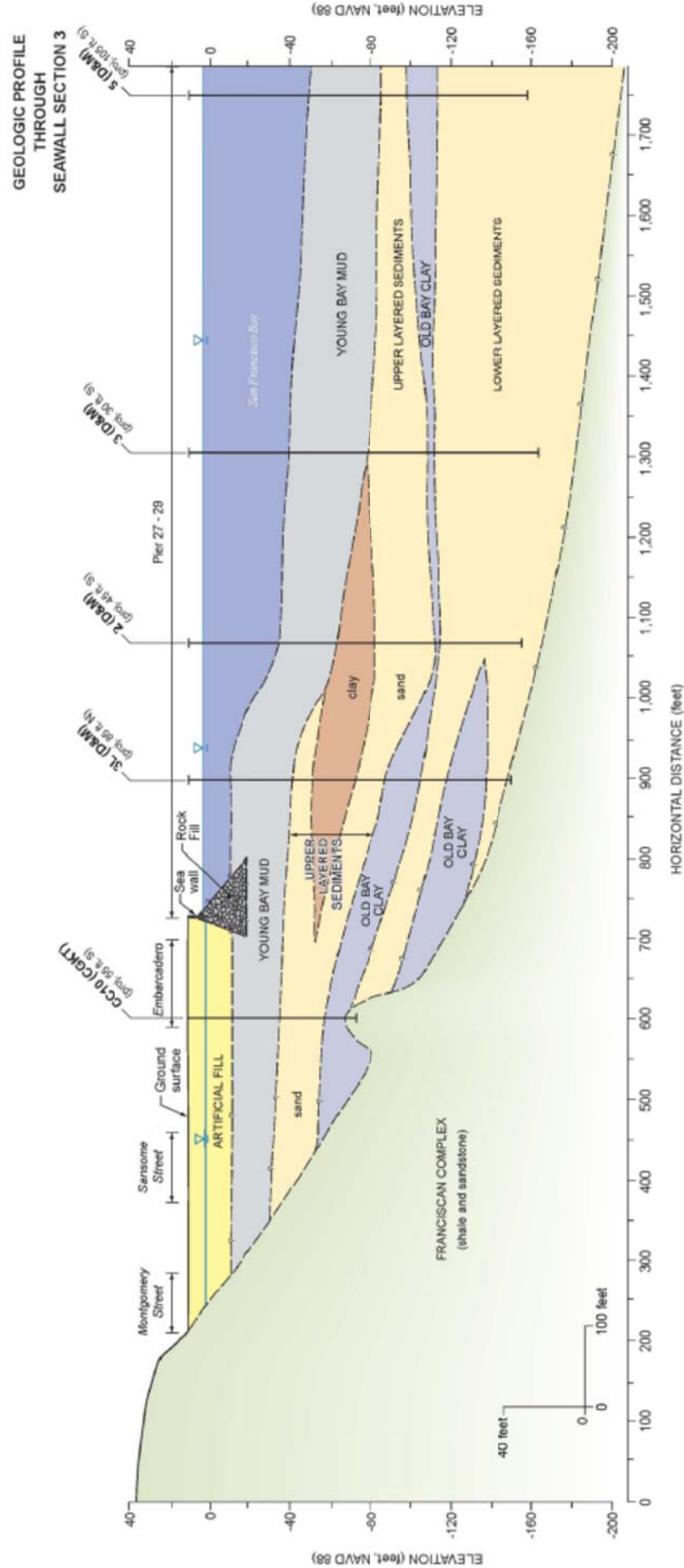


Exhibit C: Seawall Sections (4 of 8)
Historic Section 7 - Vicinity of Pier 3

GEOLOGIC PROFILE
THROUGH
SEAWALL SECTION 7

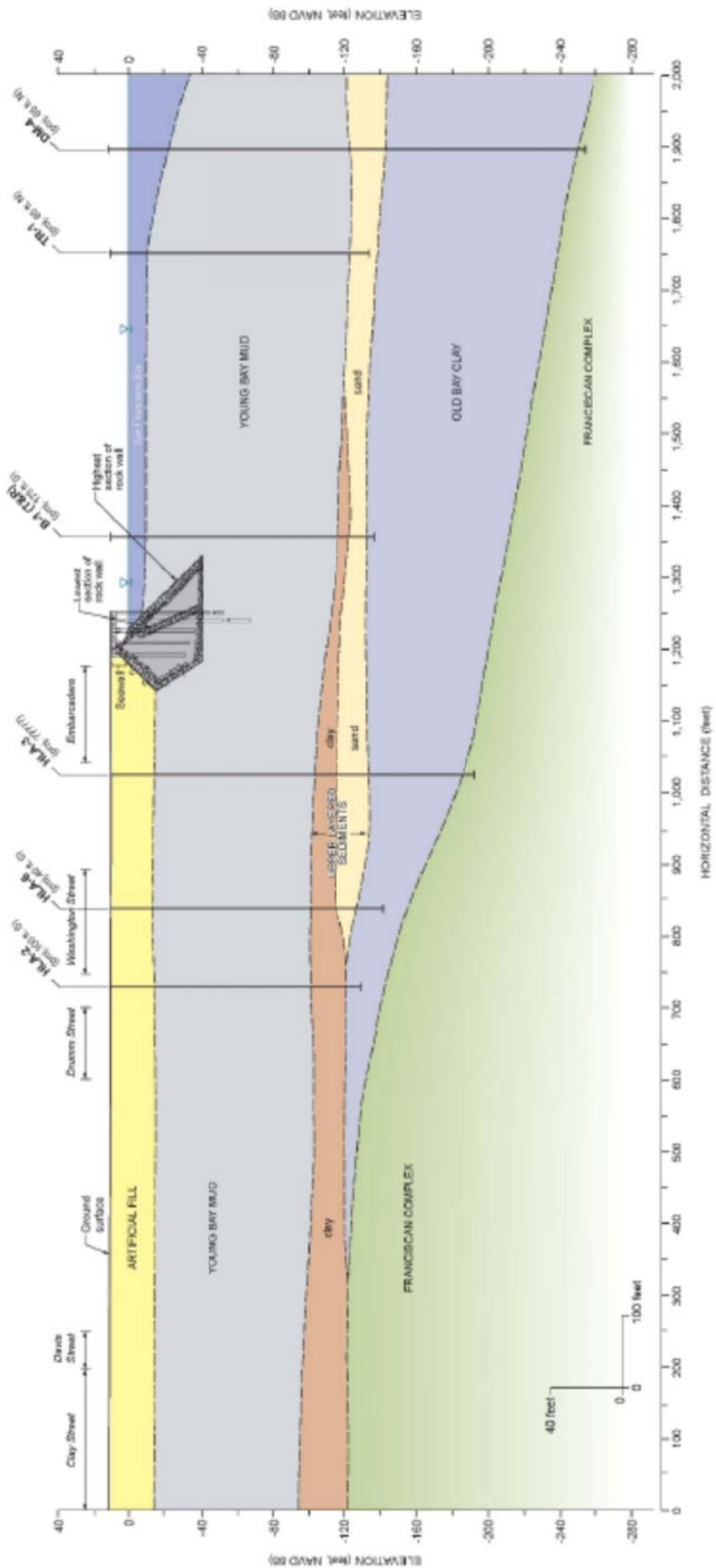


Exhibit C: Seawall Sections (5 of 8)
 Historic Section 8b - Vicinity of Ferry Building

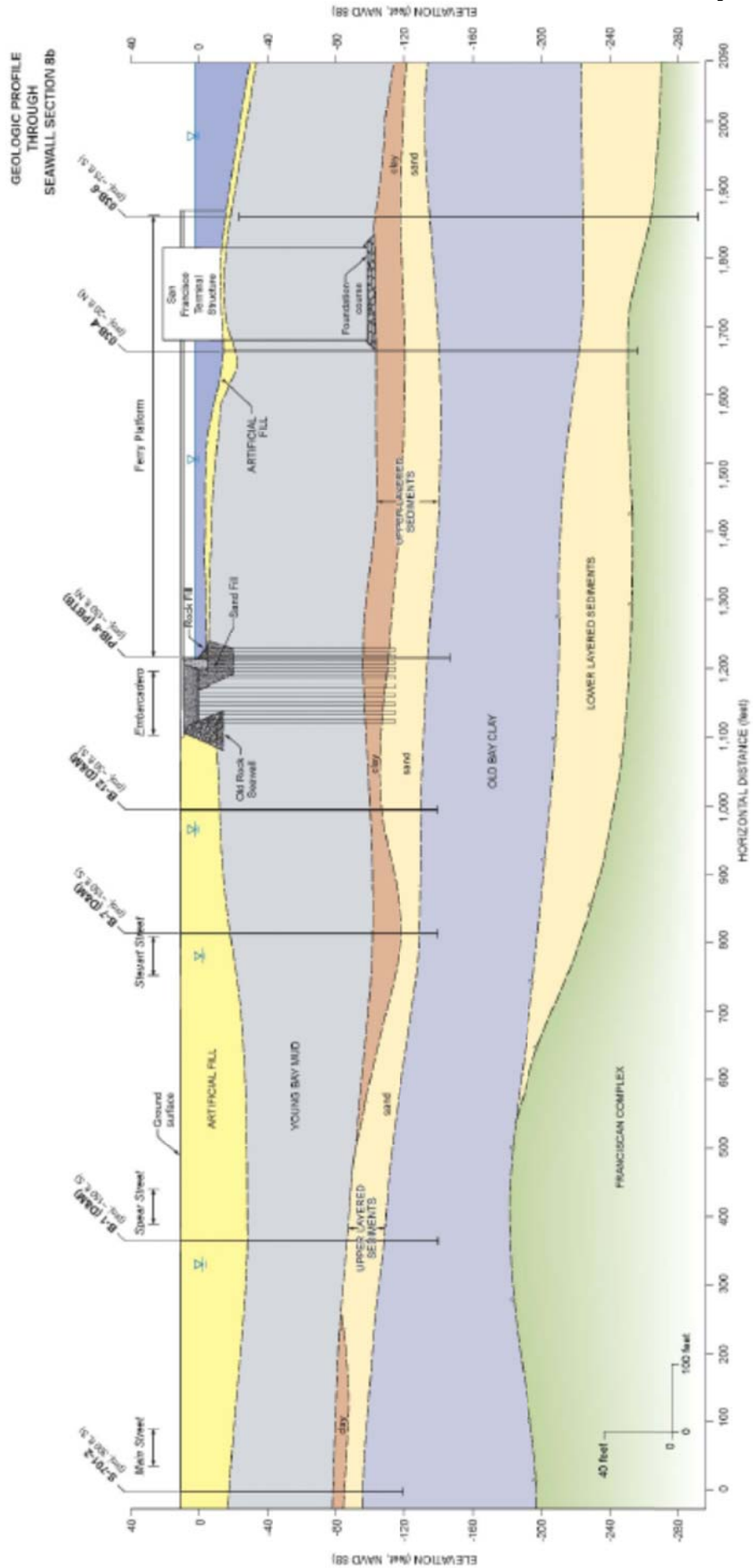


Exhibit C: Seawall Sections (6 of 8)
Historic Section 9a - Vicinity of Howard Street

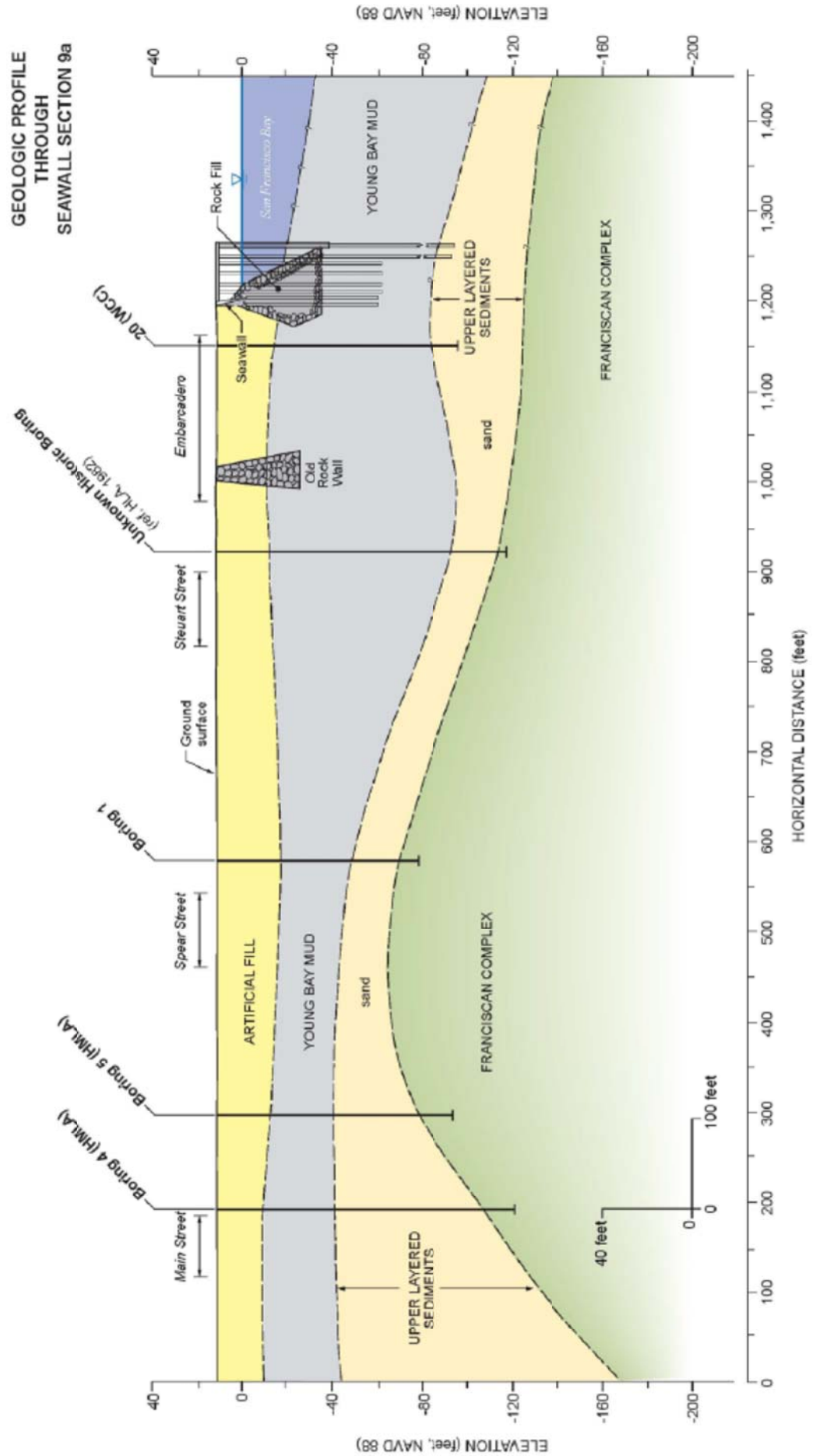
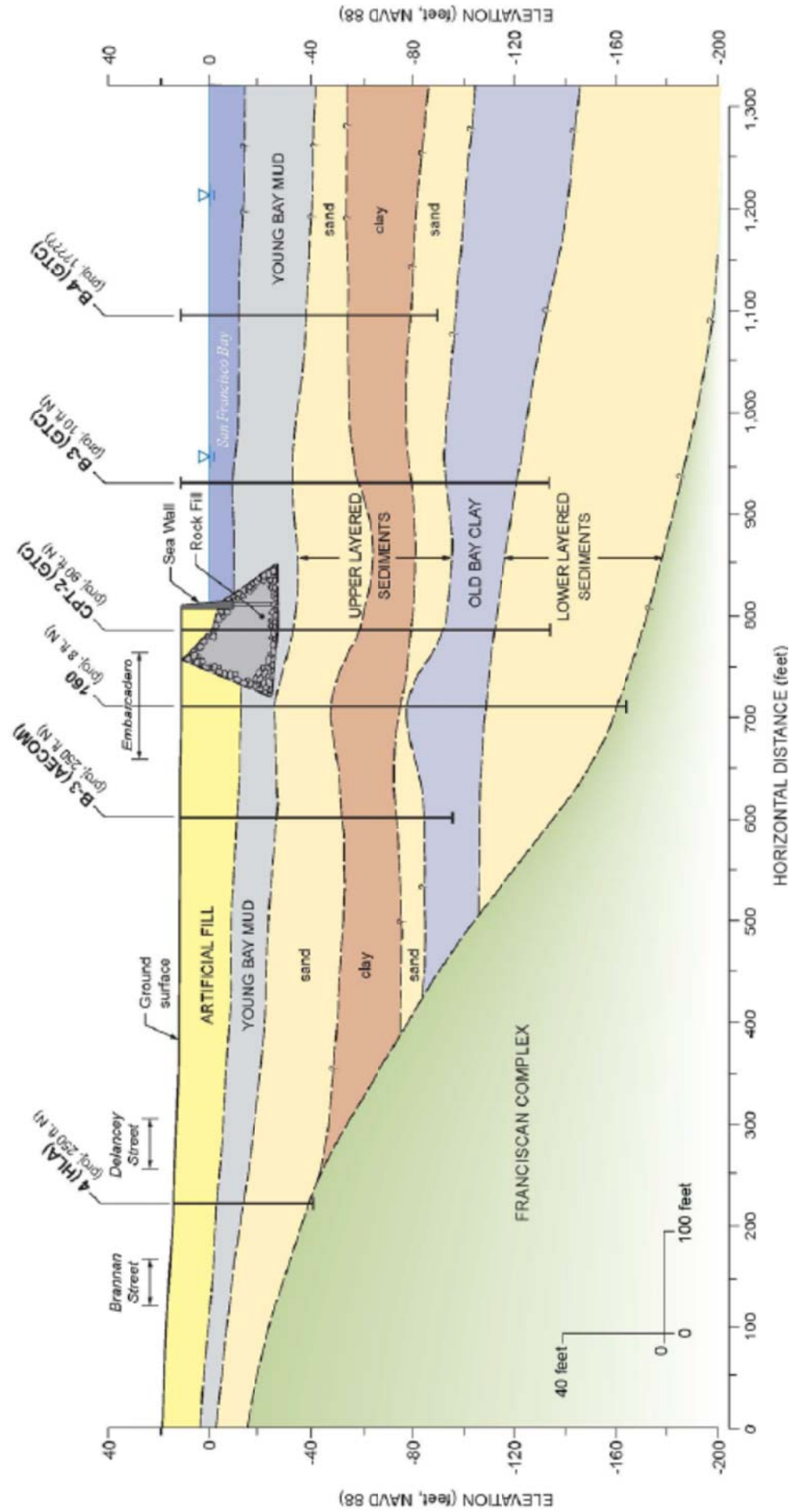
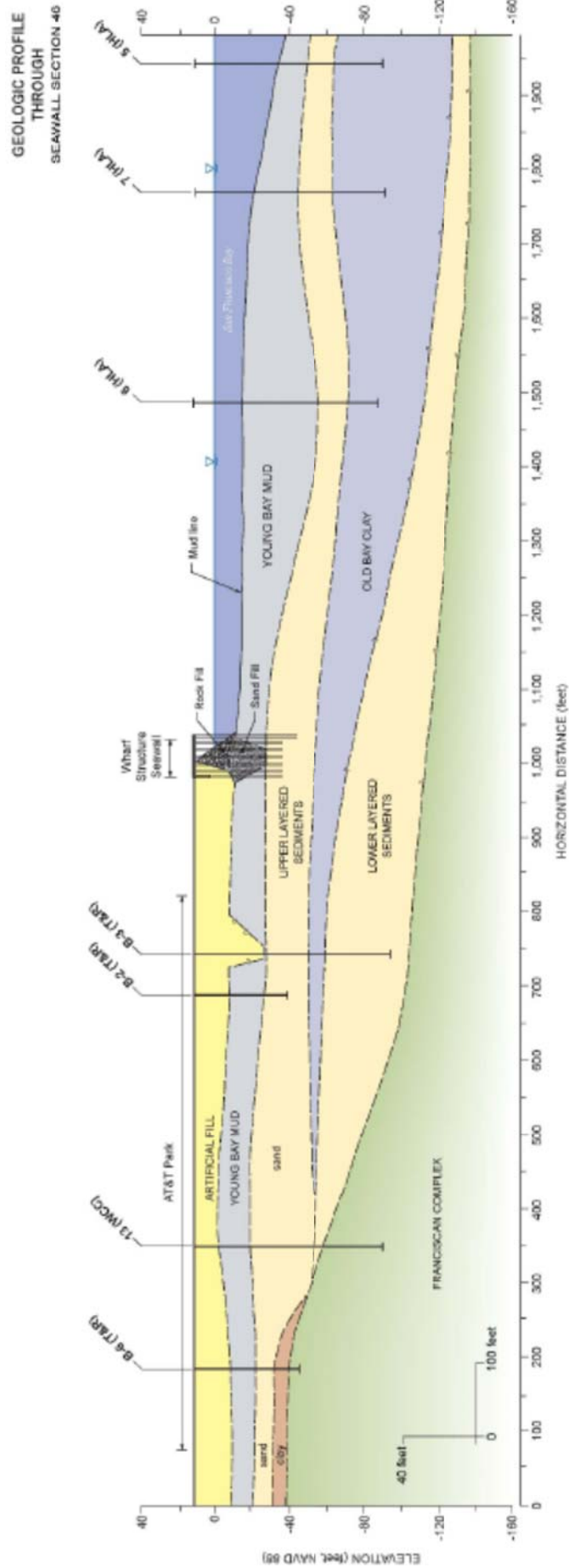


Exhibit C: Seawall Sections (7 of 8)
Historic Section 12 - Vicinity of Pier 38

GEOLOGIC PROFILE
THROUGH
SEAWALL SECTION 12



GEOLOGIC PROFILE
THROUGH
SEAWALL SECTION 46



Comparison of 1906 and 1989 Loma Prieta records at Gottingen, Germany

