



ONESF

Building Our Future

onesanfrancisco.org

There's only one San Francisco. Let's take care of it.



Intro to Facility System of Record (FSR)

March 27, 2017

What is the Facilities System of Record (FSR)?

2

- ❑ A system of record that consolidates core facility data into a single consistent source
- ❑ Contains City-owned and some City-leased facilities
- ❑ Consolidated facility data from: REIS (RES), Infor (DPW), FRRM (CPP), Energy Benchmark (PUC), Assessor Parcels, and more.

The FSR Data

3

□ Products and Access

- DataSF dataset: [City Facilities](#)
 - This is derived from joining facility, land, parcel, department and tenant tables
- Real Property Map: [Real Property 2016](#)
 - Based on Land geospatial table
- Map Services via [REST API](#)
- Web Apps: [Demo](#)

□ Fields on DataSF

- Facility_ID, Common_Name
- Address, City, ZIP_Code
- Block_Lot
- Owned_Leased
- Dept_ID, Department_Name
- Land_ID, Land_Name
- Tenants
- Gross_Sq_Ft
- Dropped_from_db
- Longitude, Latitude, Geom

Roles and Responsibilities

4

- ❑ Real Estate Division (RED) and the Capital Planning Program (CPP) are the business owners of the database.
- ❑ Department of Technology's SFGIS Program (SFGIS) maintains the database as well as the supporting infrastructure.

Benefits and Uses

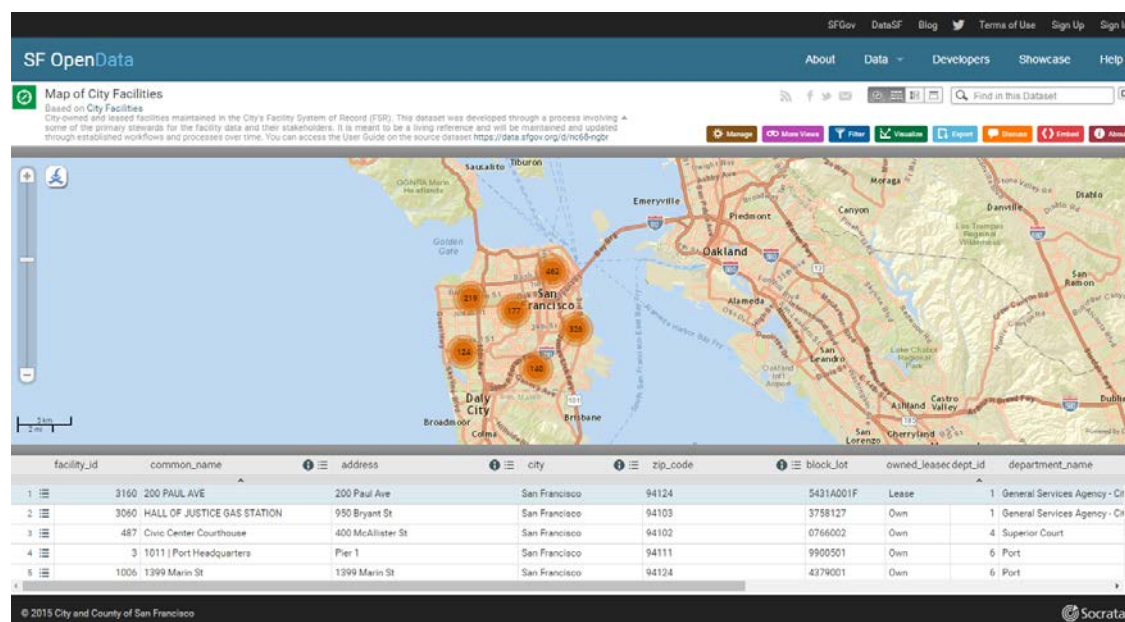
5

- ❑ Improves ability to track facilities and report on them
 - ❑ List all City-owned properties by District, Block/Lot, Property Name, Address, Dept. Jurisdiction or the City as a whole for the Supervisors
 - ❑ List surplus City-owned properties for Mayor's Office
 - ❑ List City-owned properties for public viewing through Real Estate website
- ❑ Informs capital plan, surplus property ordinance, and other legislative requirements
- ❑ Potential ties to City asset management tools such as Infor, F\$P, and resilience-related databases and lists
- ❑ One location for what the City owns
- ❑ Improves interdepartmental coordination

Accessing the Data

6

- ❑ Select data publicly available through the City's open data portal
 - ❑ [Facility System of Record on data.sfgov.org](https://data.sfgov.org/d/n66-ndgr)



- ❑ Full data set available to City users via intranet and/or direct database access

How Data are Related in FSR

7



How Data are Related in FSR

8



Data Updates

9

❑ Changes to the dataset are triggered by:

- ❑ The sale of a property
- ❑ The leasing of a property
- ❑ The purchase of a property
- ❑ The change in jurisdiction of a property (e.g., from MTA to DPW)
- ❑ The removal or improvement of the property

❑ Changes are tracked in ServiceNow

- ❑ Currently, an email to DT-Service Desk from RED or CPP is sufficient
- ❑ We plan to take advantage of the workflow functionality of ServiceNow to incorporate approvals and notifications

Data Integrity

10

- ❑ Arriving at high-quality core dataset required significant effort from DPW and DT
- ❑ Governance structure in place to maintain value of system moving forward
 - ❑ Data maintenance and improvement process
 - ❑ Data requirements and supporting processes
 - ❑ Governing Committee – Capital Planning, DT, RED, CDO/MYR

Q/A

11

□ Questions?