

# MOSCONE EXPANSION UPDATE

CAPITAL PLANNING COMMITTEE

10 January 2017





## EXPAND WITHIN THE EXISTING FOOTPRINT

The project will result in 515,000 SF of new and repurposed contiguous exhibition space.

Increase below ground connection between North & South

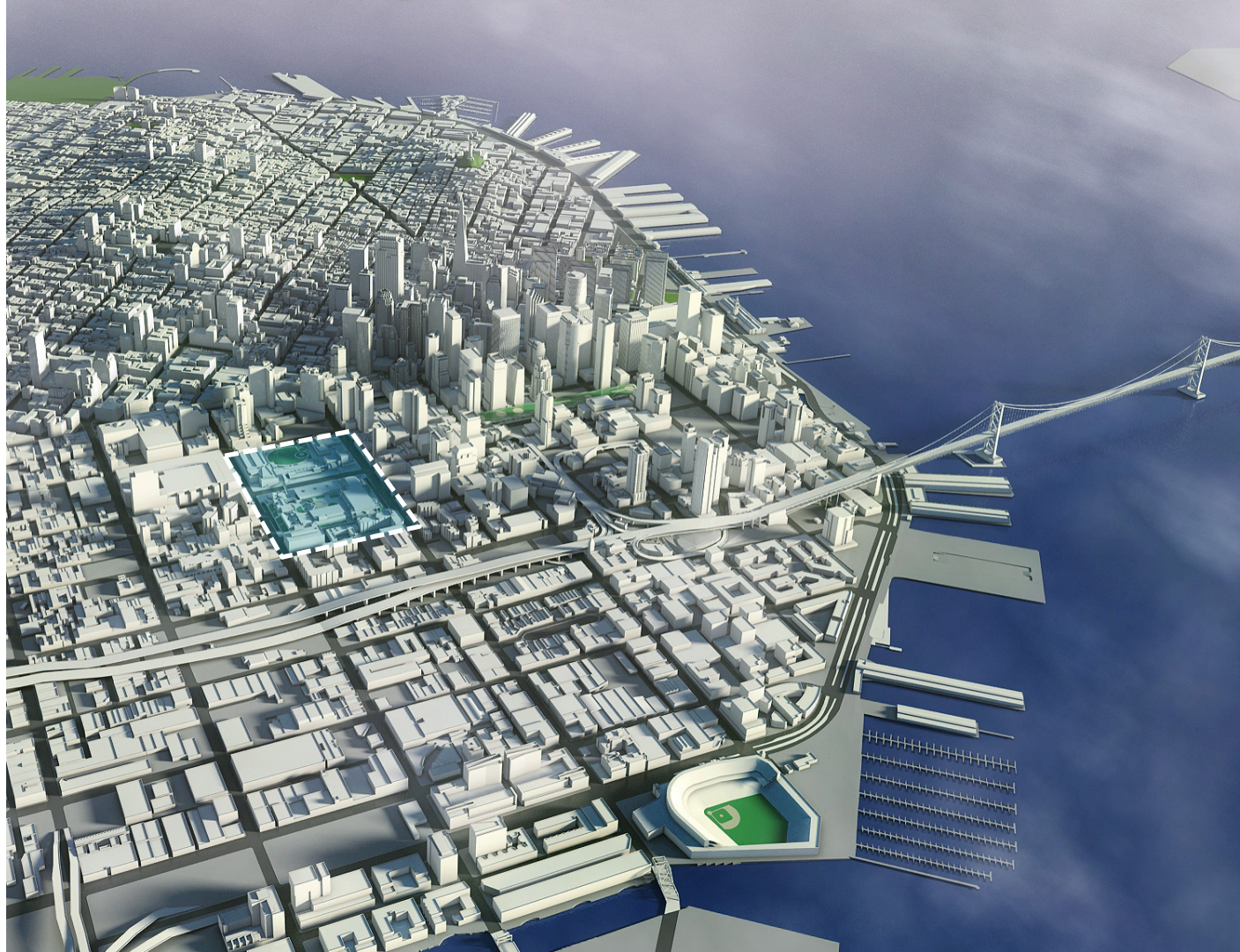
Expand North & South lobby area

Remodel South Hall entrance and include new canopy

Build a new pedestrian bridge connecting North & South

Replace west bridge to improve pedestrian circulation

Reconfigure open public spaces





## ***ACHIEVEMENTS TO DATE***

<b><i>MOSCONE EXPANSION DISTRICT FORMATION</i></b>	<b><i>FEB 2013</i></b>	<b><i>BOS</i></b>	<b><i>UNANIMOUS</i></b>
<b><i>FINDING OF FISCAL FEASIBILITY</i></b>	<b><i>FEB 2013</i></b>	<b><i>BOS</i></b>	<b><i>UNANIMOUS</i></b>
<b><i>FUNDING - CERTIFICATE OF PARTICIPATION</i></b>	<b><i>FEB 2013</i></b>	<b><i>BOS</i></b>	<b><i>UNANIMOUS</i></b>
<b><i>CIVIC DESIGN REVIEW PHASE I</i></b>	<b><i>OCT 2013</i></b>	<b><i>SFAC</i></b>	<b><i>UNANIMOUS</i></b>
<b><i>CIVIC DESIGN REVIEW PHASE II</i></b>	<b><i>OCT 2014</i></b>	<b><i>SFAC</i></b>	<b><i>UNANIMOUS</i></b>
<b><i>CIVIC DESIGN REVIEW PHASE III</i></b>	<b><i>MAY 2016</i></b>	<b><i>SFAC</i></b>	<b><i>UNANIMOUS</i></b>
<b><i>FINAL ENVIRONMENTAL IMPACT REPORT</i></b>	<b><i>AUG 2014</i></b>	<b><i>PLANNING</i></b>	<b><i>UNANIMOUS</i></b>
<b><i>COMPLETED 83 OF 85 BID PACKAGES</i></b>	<b><i>ON-GOING</i></b>		
<b><i>COMPLETED PHASES 0 AND 1 ON-TIME</i></b>	<b><i>NOV 2014 – JAN 2015</i></b>		



## BIDDING

PHASE 0 & 1      28 BID PACKAGES  
PHASES 2 & 3      57 BID PACKAGES  
85 BID PACKAGES IN TOTAL

- TWO BID PACKAGE UNDER REVIEW FOR AWARD (BIRD CONTROL & WATERLINE RELOCATION)
- **LBE GOAL 15%**
- **CURRENTLY TRACKING AT 17.66%**
- **\$57.6M TO LBE SUBS**



# MOSCONE CONVENTION CENTER BUDGET STATUS

CURRENT CONSTRUCTION BUDGET \$437.5M  
SPENT TO DATE \$166M

## **PHASED CONSTRUCTION – 54% COMPLETE**

### PHASE 0

NOV 2014 – MAY 2015 ON TIME

- ENABLING WORK – UTILITY RELOCATION

### PHASE 1

MAY 2015 – JAN 2016 ON TIME

- TRUCK RAMP RELOCATION, TEMP CONNECTOR TO ESPLANADE

### PHASE II

JAN 2015 – SEPT 2017 TRACKING ON TIME

- DEMOLITION AND CONSTRUCTION OF NEW BUILDING (EASTERN HALF)

### PHASE III

APRIL 2017– DEC 2018

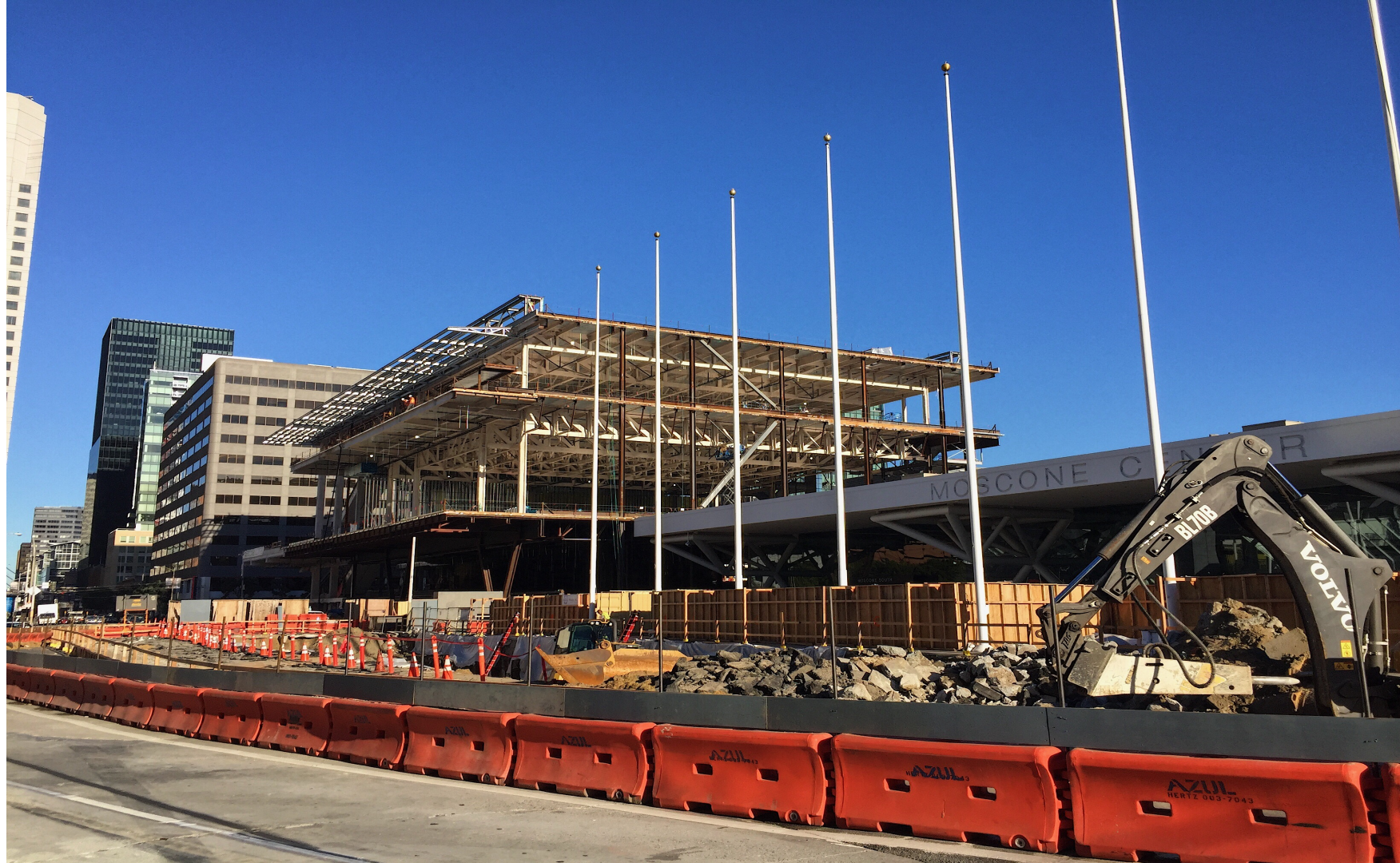
- DEMOLITION AND CONSTRUCTION OF NEW BUILDING (WESTERN HALF, TWO BRIDGES, EXCAVATION OF HOWARD STREET, SITE WORK AND CHILDREN'S PLAYGROUND)

\* 5 MONTH OVERLAP BETWEEN PHASE 2 & 3 (CENTER WILL BE SHUT DOWN)

## **CHALLENGES**

MARKET CONDITIONS (MATERIAL AND LABOR COSTS), COMPLEXITY, UNFORESEEN CONDITIONS, SUBCONTRACTOR INTEREST (FEW BIDS)

















2017/01/03





AM 8:41 JAN/ 5/2017







# Questions

