



Port of San Francisco Capital Plan Update for Fiscal Years 2018-2027

CAPITAL PLANNING COMMITTEE

JANUARY 10, 2017

PRESENTED BY: ANANDA HIRSCH, CAPITAL MANAGER

Accomplishments

Port of San Francisco Capital Plan

- ✓ Lease with Orton Development for 20th Street historic buildings & first Port Infrastructure Financing District (IFD)
- ✓ First contract for Crane Cove Park Project, Phase 1
- ✓ Pier 35 bulkhead building repairs
- ✓ Bayview Gateway (pictured)



Summary of Need & Changes

Port of San Francisco Capital Plan

	State of Good Repair (\$ millions)				Enhancements (\$ millions)	Grand Total
	Backlog	Renewals	One-time	Total	Total	
Prior Plan (FY2016-25)	\$ 569.4	\$ 570.2	\$ 481.3	\$ 1,622.3	\$ 840.8	\$ 2,463.1
Change	\$ (95.7)	\$ (26.3)	\$ (6.7)	\$ (130.1)	\$ 947.7	\$ 817.6
Current Plan (FY 2018-27)	\$ 473.7	\$ 543.9	\$ 474.6	\$ 1,492.2	\$ 1,788.5	\$ 3,280.7

State of Good Repair drivers of change

- ✓ Work completed
- ✓ Updated cost estimates
- ✓ Passage of time

Summary of Need & Changes

Port of San Francisco Capital Plan

	Enhancements (\$ millions)					State of Good Repair (\$ millions)	Grand Total
	Seawall Resiliency	Enhancements	Conditional Seismic	Total	Total		
Prior Plan (FY2016-25)	\$ -	\$ 365.8	\$ 475.0	\$ 840.8	\$ 1,622.3	\$ 2,463.1	
Change	\$ 493.5	\$ 367.5	\$ 86.7	\$ 947.7	\$ (130.1)	\$ 817.6	
Current Plan (FY 2018-27)	\$ 493.5	\$ 733.3	\$ 561.7	\$ 1,788.5	\$ 1,492.2	\$ 3,280.7	

Enhancements drivers of change

- ✓ Updated cost estimates
- ✓ Newly identified needs
- ✓ Passage of time

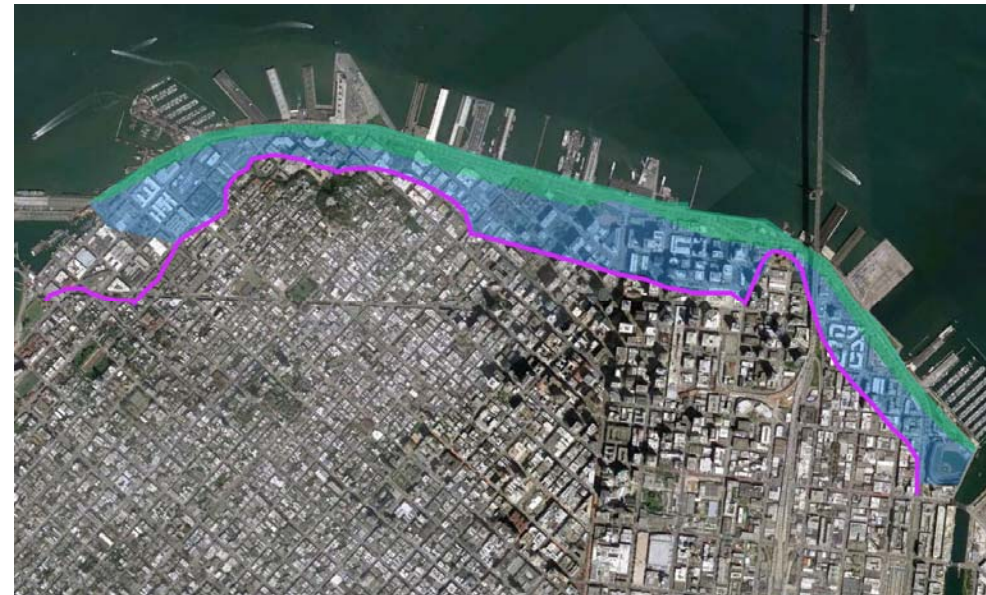
Summary of Need & Changes

Port of San Francisco Capital Plan

Needs newly identified in the plan

- ✓ Mission Bay Ferry Landing (\$42.7 million)
- ✓ Seawall Resiliency Project (\$500 million)
 - \$490 million deferred need
 - Project key for protecting
 - Life and safety
 - \$2.1 billion per year in Port business income, wages & rent
- ✓ Seawall Stabilization & Adaptation
\$2-\$5 billion emerging need for long-term project to stabilize Seawall and adapt to sea level rise

Seawall Zone of Seismic Influence



Seawall Resiliency Project

City-wide Assets and Services to Protect



Emergency Response



Transportation Infrastructure



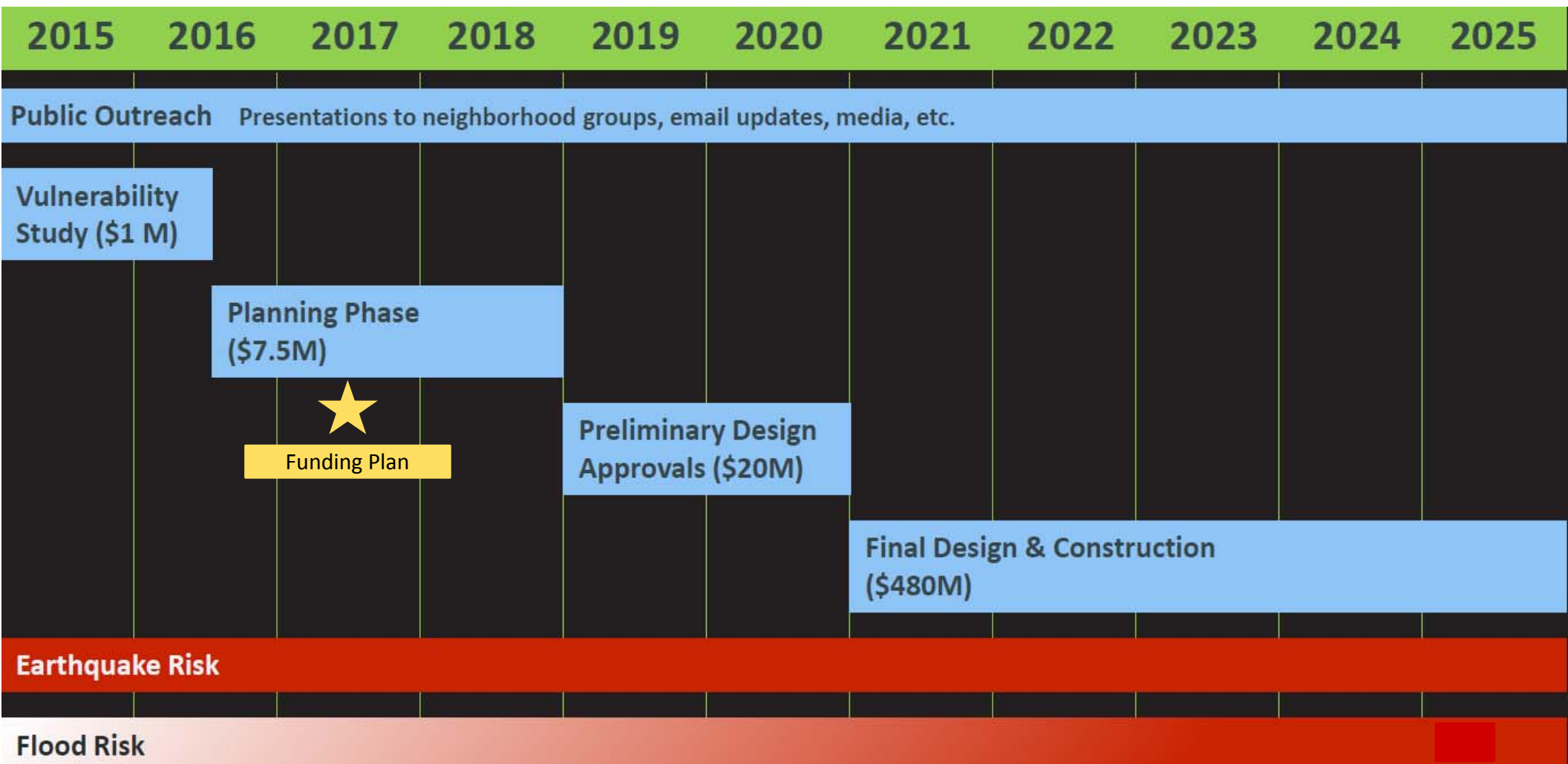
Utility Infrastructure



Embarcadero Historic District

Seawall Resiliency Project

Schedule & Budget



Enhancement Highlights

Port of San Francisco Capital Plan



20th Street Historic Buildings (ODI)



Mission Rock



Pier 70 Waterfront Site (Forest City)



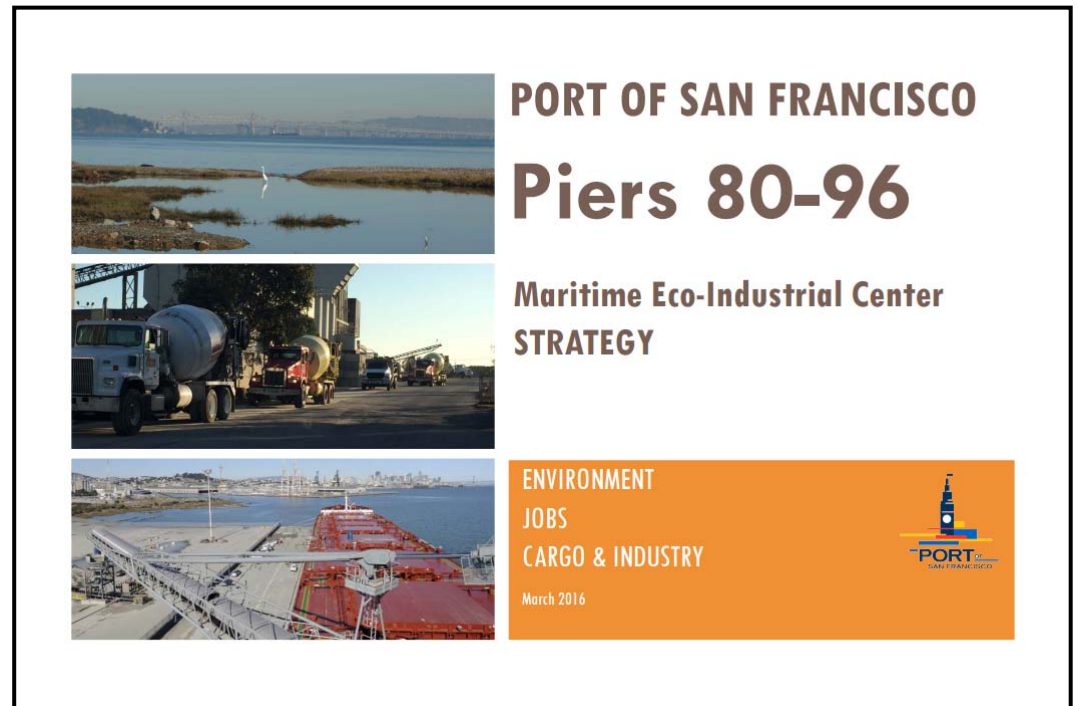
Crane Cove Park

Emerging Needs

Piers 80-96 Maritime Eco-Industrial Center

Benefits of co-locating maritime industries in the Southern Waterfront

- ✓ Business efficiencies
- ✓ Jobs for local residents
- ✓ Environmental benefits
- ✓ Community benefits
- ✓ Port revenue

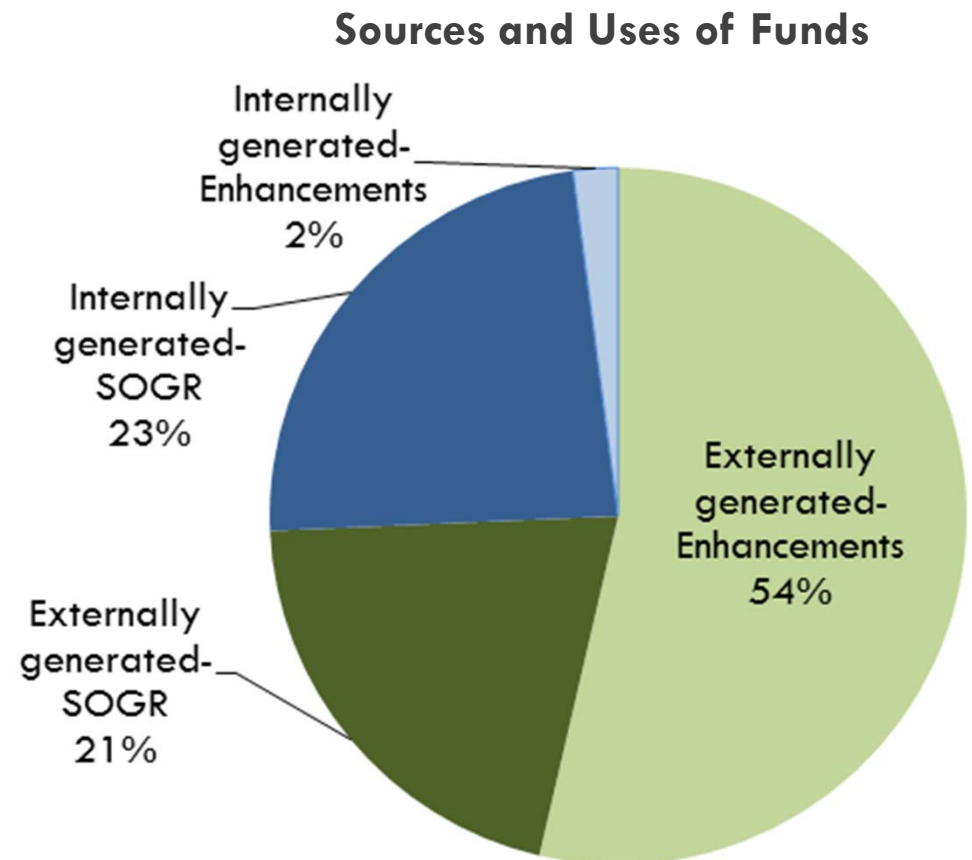


Funding Source Projections

Port of San Francisco Capital Plan

\$1.3 billion in funding projected

- ✓ \$350 million in internal sources, largely dedicated to state of good repair (SOGR)
- ✓ \$940 million in external sources, largely dedicated to enhancements



Funding Gap

Port of San Francisco Capital Plan

\$2 billion funding gap

- ✓ 40% of SOGR need is funded
- ✓ 60% of Enhancement need is funded (excluding conditional seismic)
- ✓ Unfunded Enhancement need is for Seawall Resiliency Project

Division of 10-Year Need
(\$ millions)

